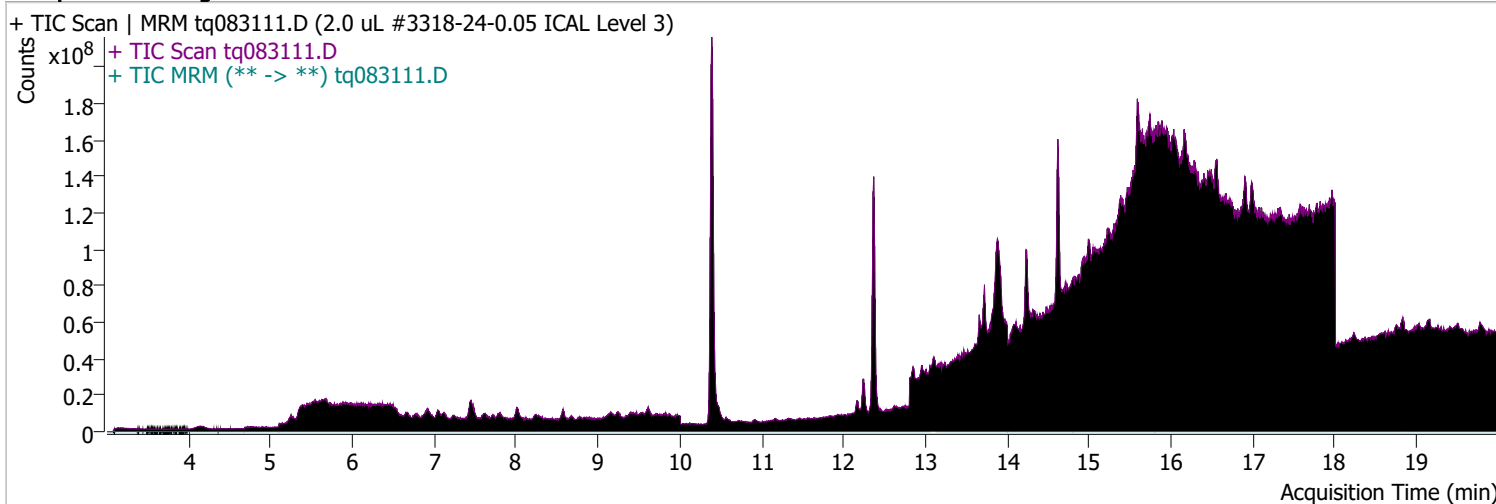


Quantitative Analysis Sample Report

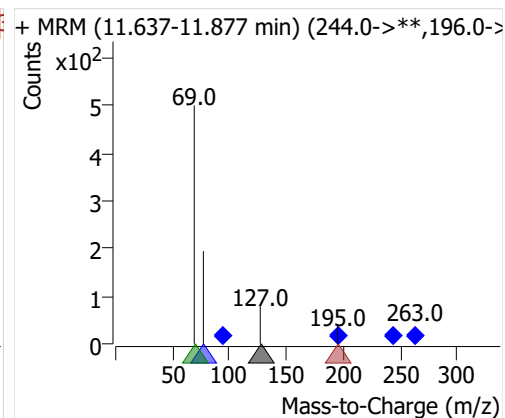
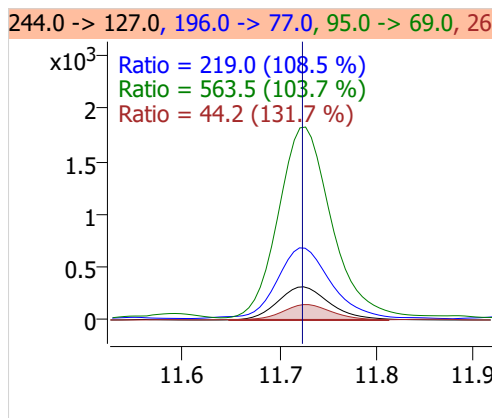
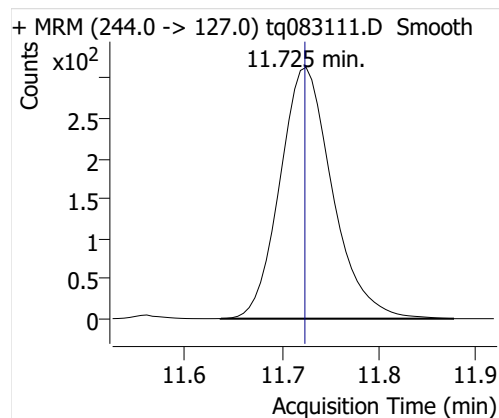
Batch Path D:\MassHunter\GCMS\1\data\31aug22a\QuantResults\31aug22.batch.bin
Analysis Time 9/6/2022 9:11 AM **Analyst Name** DESKTOP-R0LAL7E\analyst
Report Time 9/6/2022 11:41:20 AM **Reporter Name** DESKTOP-R0LAL7E\analyst
Last Calib Update 9/6/2022 9:11 AM **Batch State** Processed
Quant Batch Version 10.1 **Quant Report Version** 10.1
Acq. Time 8/31/2022 4:32 PM **Data File** tq083111.D
Sample Type Cal **Sample Name** 2.0 uL #3318-24-0.05 ICAL Level 3
Dilution 1 **Acq. Method** tq22m0831

Sample Chromatogram

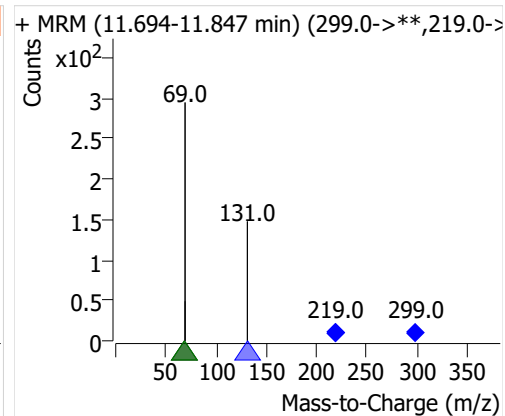
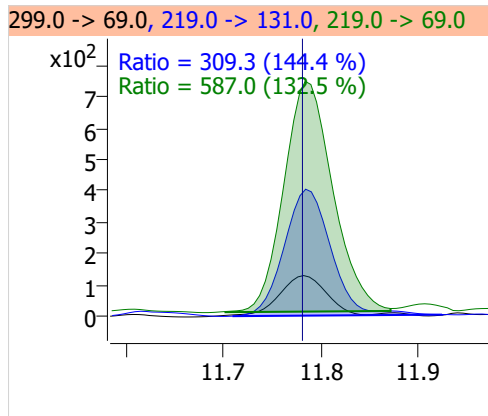
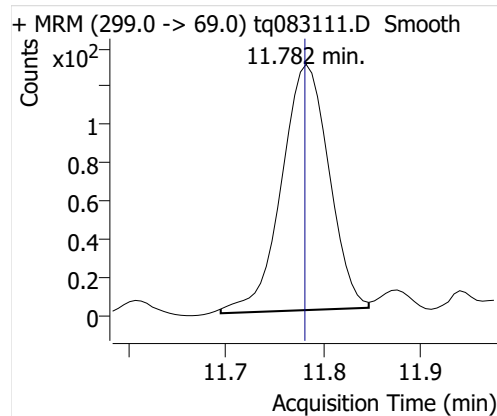


Compound	ISTD	RT	Resp.	ISTD Resp.	Resp. Ratio	Final Conc	Units
4:2 FTOH	6:2 FTOH-C13	11.725	1180	27326	0.0432	0.1038	ng
5:2sFTOH	6:2 FTOH-C13	11.782	436	27326	0.0159	0.0904	ng
7:2sFTOH	6:2 FTOH-C13	13.095	966	27326	0.0354	0.0936	ng
6:2 FTOH	6:2 FTOH-C13	13.129	2134	27326	0.0781	0.1013	ng
8:2 FTOH-C13	6:2 FTOH-C13	14.330	7708	27326	0.2821	0.9128	ng
8:2 FTOH	6:2 FTOH-C13	14.331	773	27326	0.0283	0.1258	ng
10:2 FTOH	6:2 FTOH-C13	15.405	165	27326	0.0060	0.0803	ng
12:2 FTOH	6:2 FTOH-C13	16.381	949	27326	0.0347	0.1219	ng
NMeFOSA	6:2 FTOH-C13	18.578	546	27326	0.0200	0.1112	ng
NEtFOSA	6:2 FTOH-C13	18.847	2421	27326	0.0886	0.1103	ng

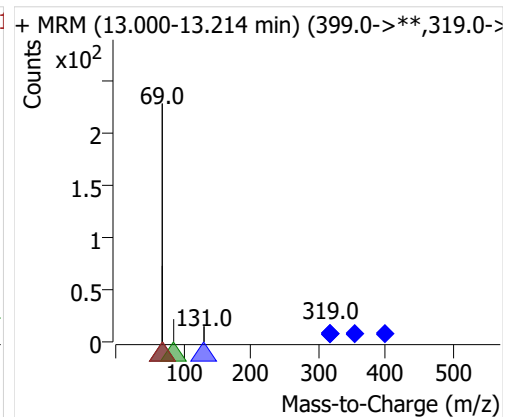
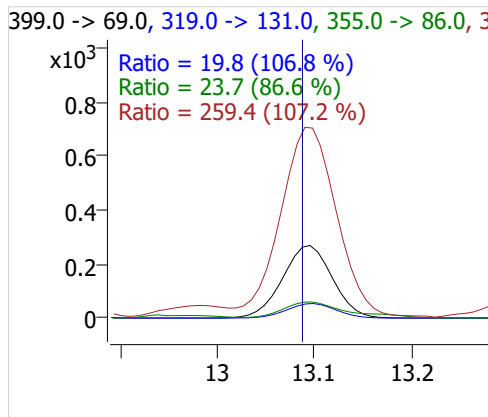
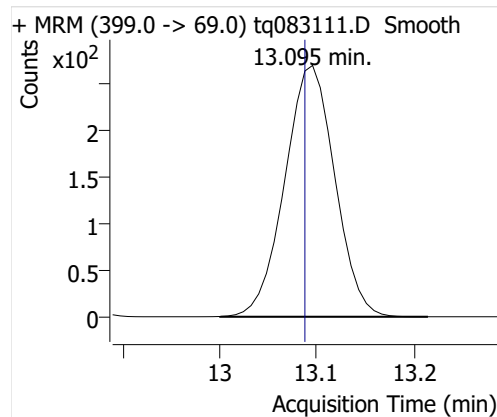
4:2 FTOH



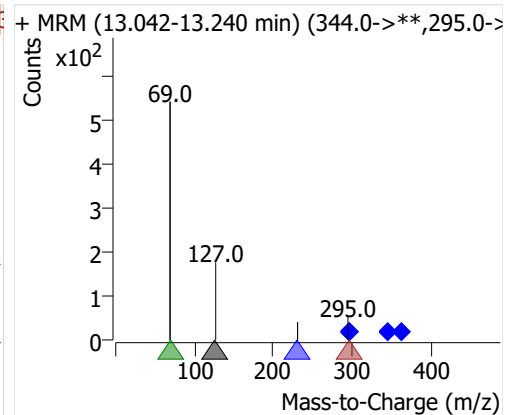
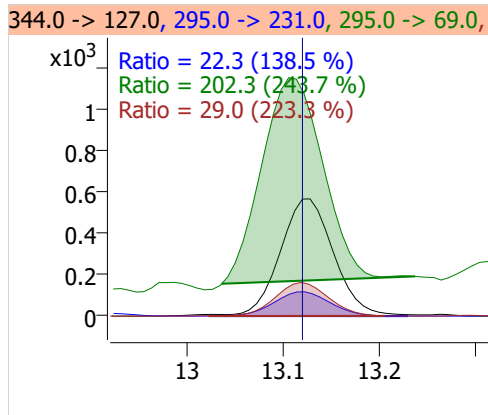
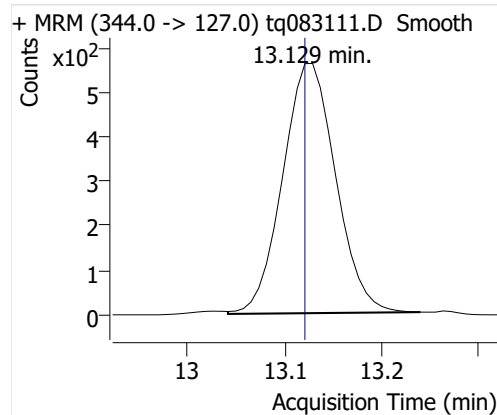
5:2sFTOH



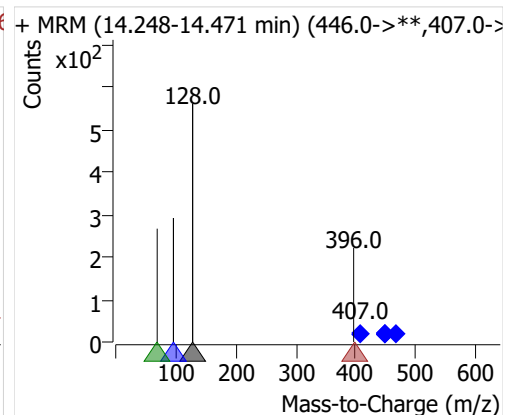
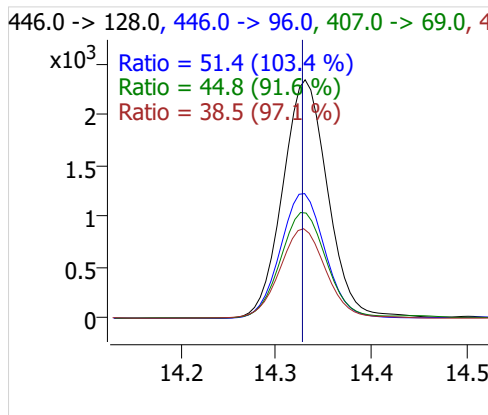
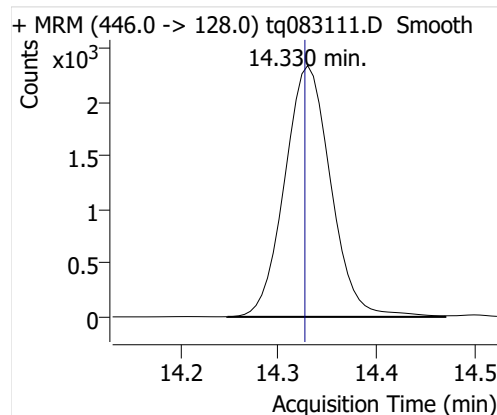
7:2sFTOH



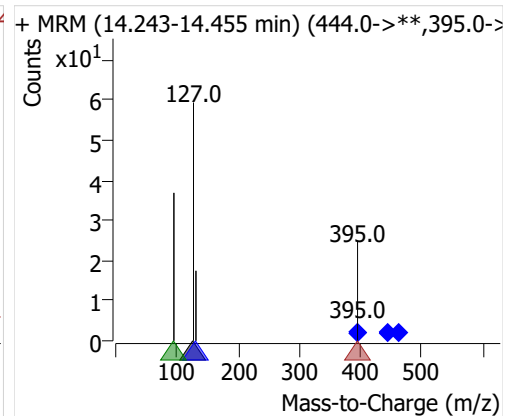
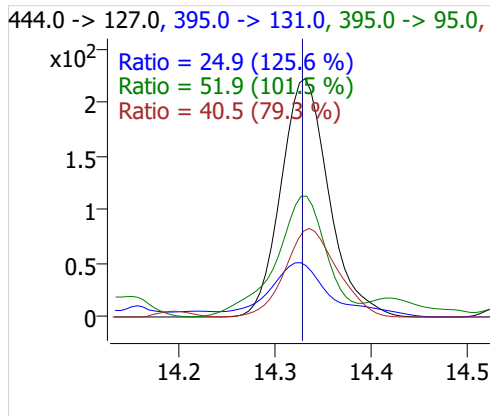
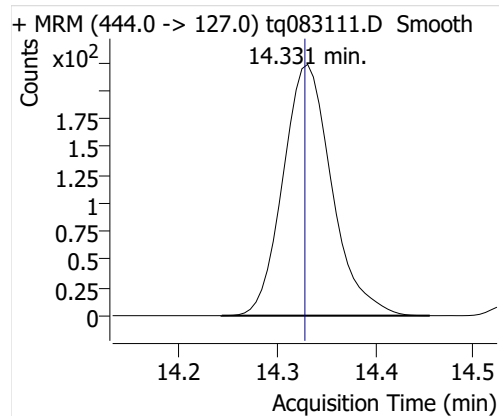
6:2 FTOH



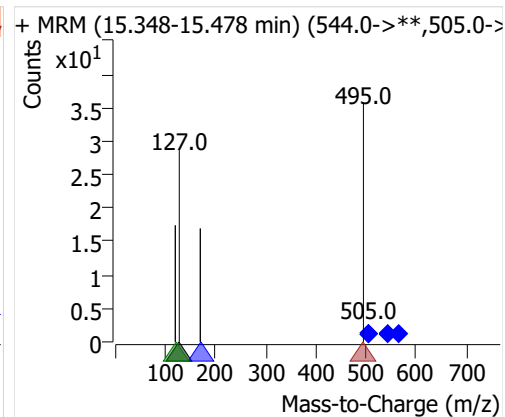
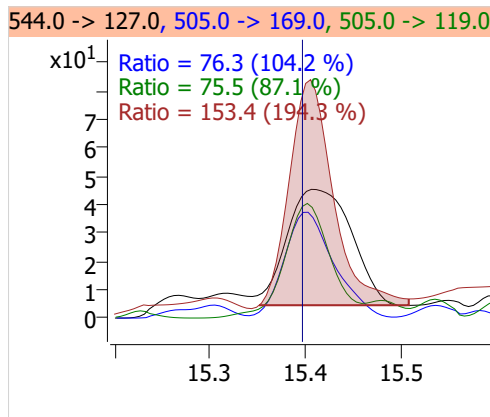
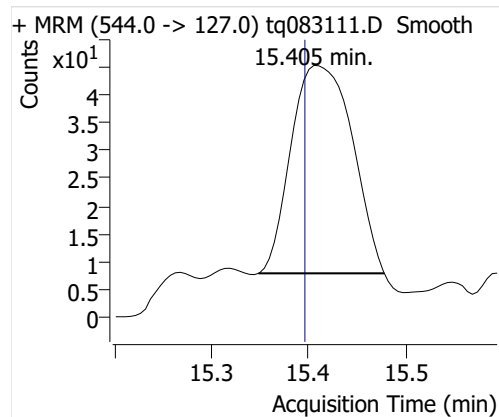
8:2 FTOH-C13



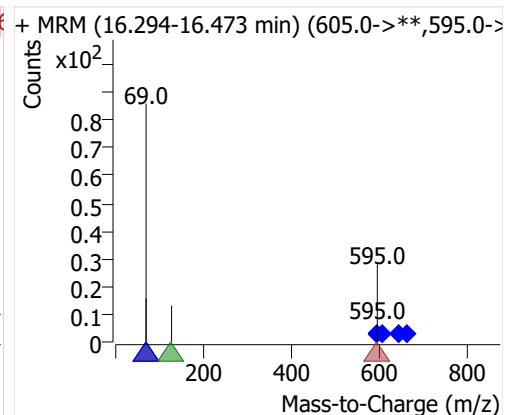
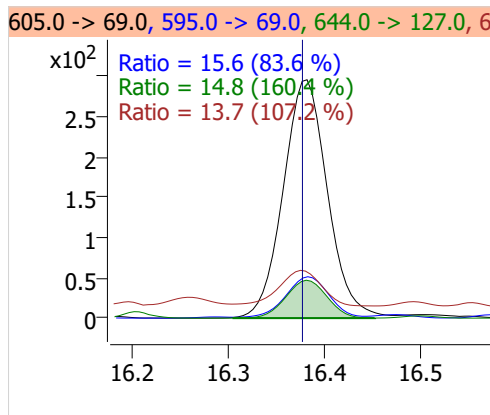
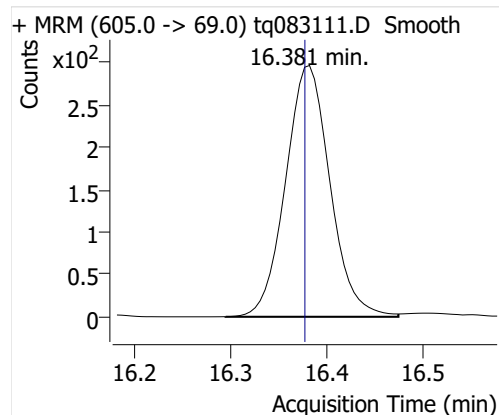
8:2 FTOH



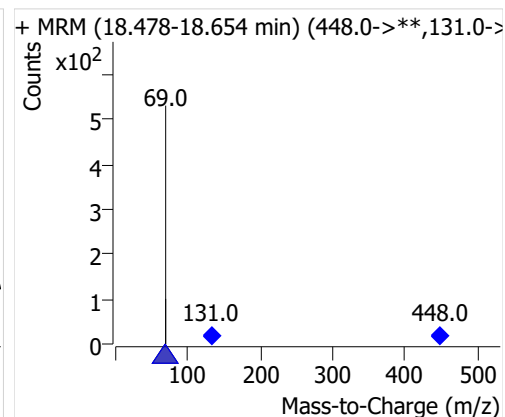
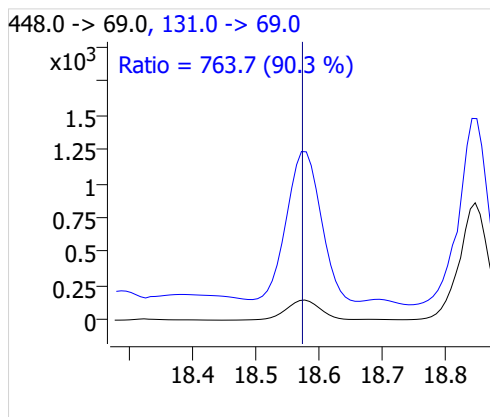
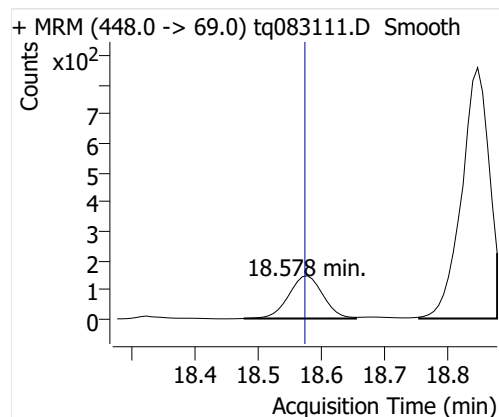
10:2 FTOH



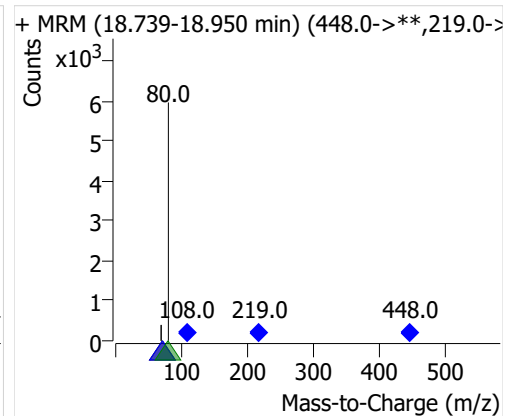
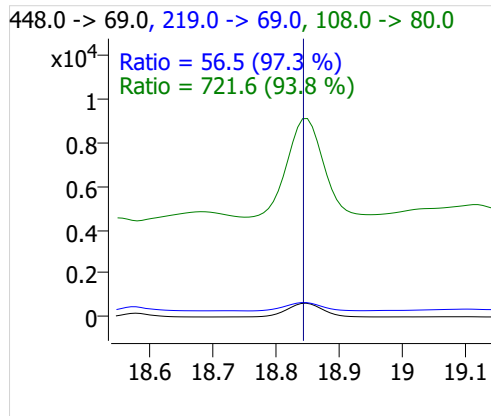
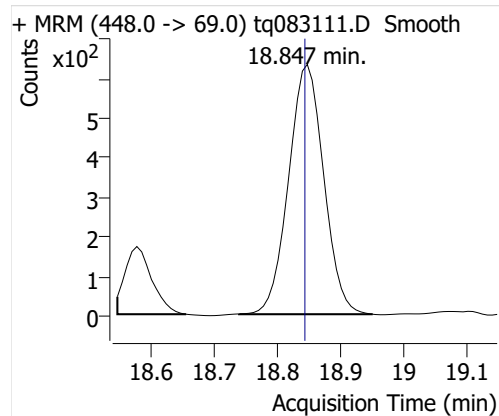
12:2 FTOH



NMeFOSA



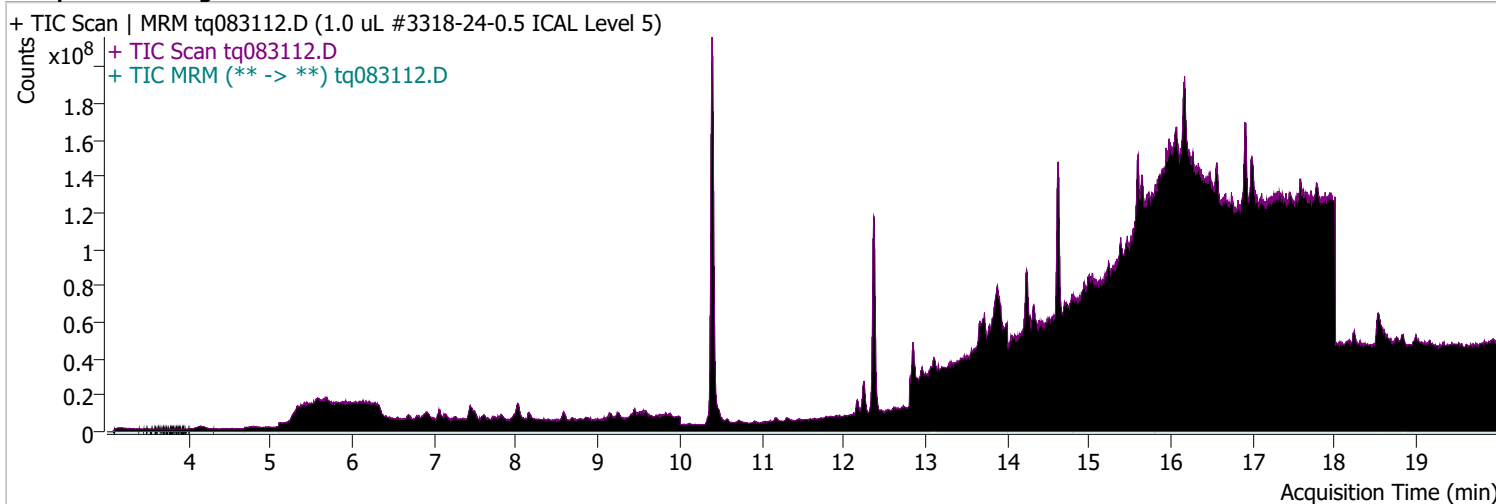
NETFOSA



Quantitative Analysis Sample Report

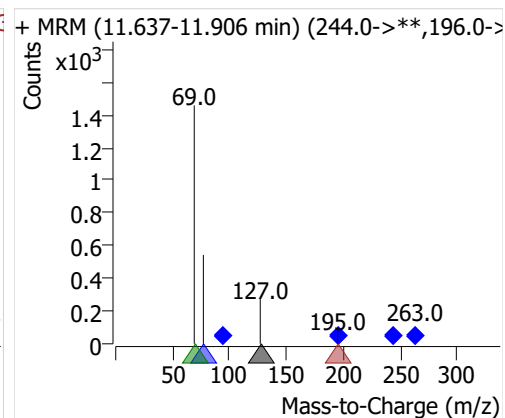
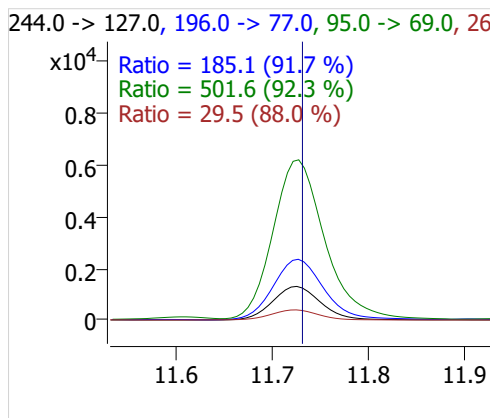
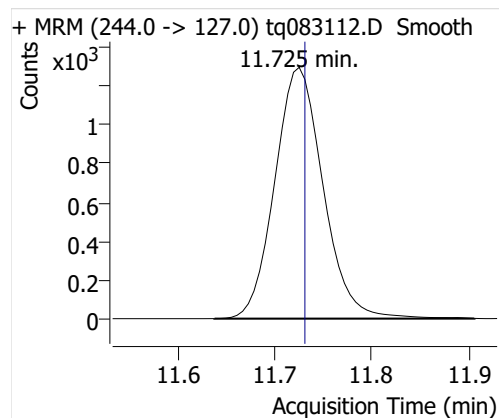
Batch Path D:\MassHunter\GCMS\1\data\31aug22a\QuantResults\31aug22.batch.bin
 Analysis Time 9/6/2022 9:11 AM Analyst Name DESKTOP-R0LAL7E\analyst
 Report Time 9/6/2022 11:41:22 AM Reporter Name DESKTOP-R0LAL7E\analyst
 Last Calib Update 9/6/2022 9:11 AM Batch State Processed
 Quant Batch Version 10.1 Quant Report Version 10.1
 Acq. Time 8/31/2022 5:12 PM Data File tq083112.D
 Sample Type Cal Sample Name 1.0 uL #3318-24-0.5 ICAL Level 5
 Dilution 1 Acq. Method tq22m0831

Sample Chromatogram

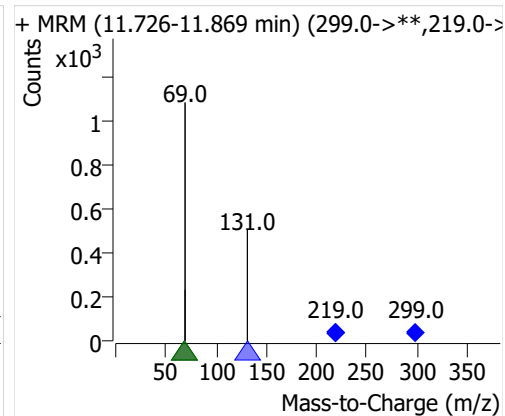
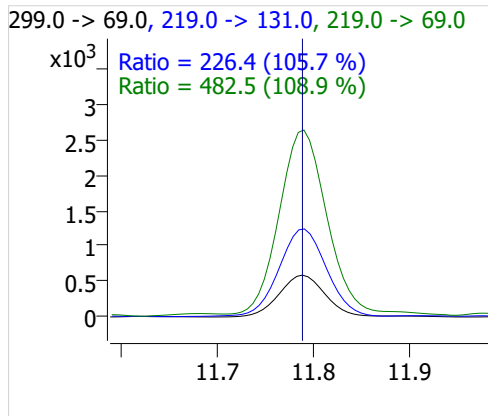
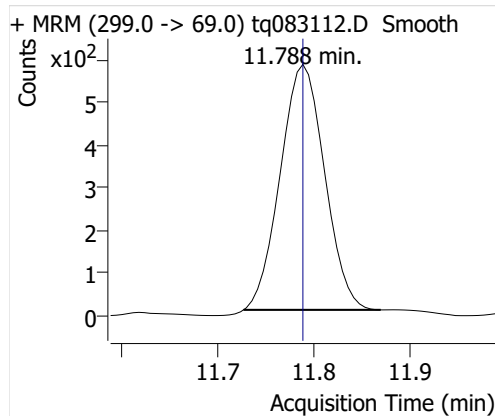


Compound	ISTD	RT	Resp.	ISTD Resp.	Resp. Ratio	Final Conc	Units
4:2 FTOH	6:2 FTOH-C13	11.725	4526	26048	0.1738	0.4177	ng
5:2sFTOH	6:2 FTOH-C13	11.788	1837	26048	0.0705	0.3998	ng
7:2sFTOH	6:2 FTOH-C13	13.095	4529	26048	0.1739	0.4604	ng
6:2 FTOH	6:2 FTOH-C13	13.121	8811	26048	0.3383	0.4387	ng
8:2 FTOH-C13	6:2 FTOH-C13	14.330	8353	26048	0.3207	1.0378	ng
8:2 FTOH	6:2 FTOH-C13	14.331	2845	26048	0.1092	0.4859	ng
10:2 FTOH	6:2 FTOH-C13	15.400	1126	26048	0.0432	0.5751	ng
12:2 FTOH	6:2 FTOH-C13	16.381	3476	26048	0.1335	0.4684	ng
NMeFOSA	6:2 FTOH-C13	18.578	2355	26048	0.0904	0.5038	ng
NEtFOSA	6:2 FTOH-C13	18.847	10622	26048	0.4078	0.5078	ng

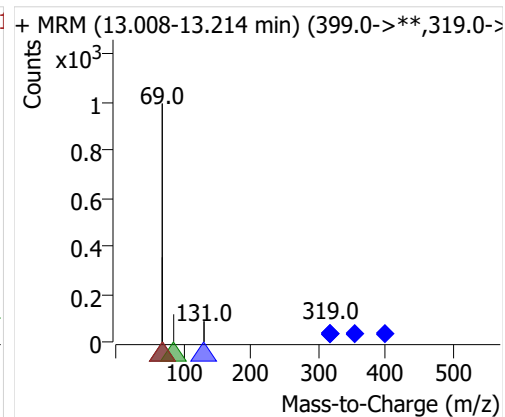
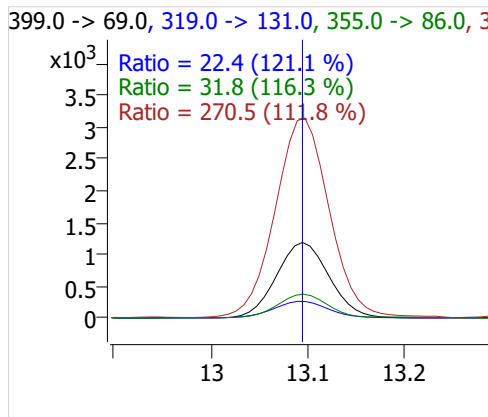
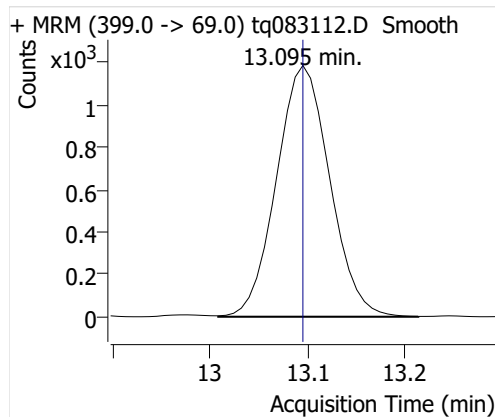
4:2 FTOH



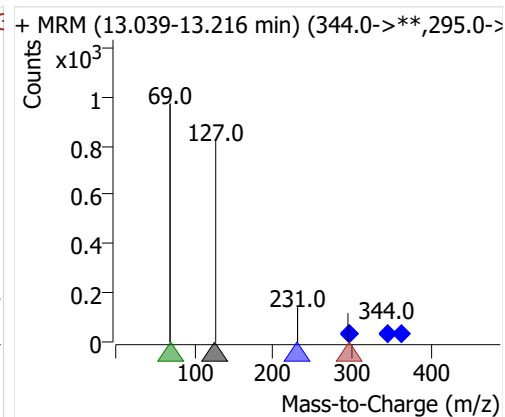
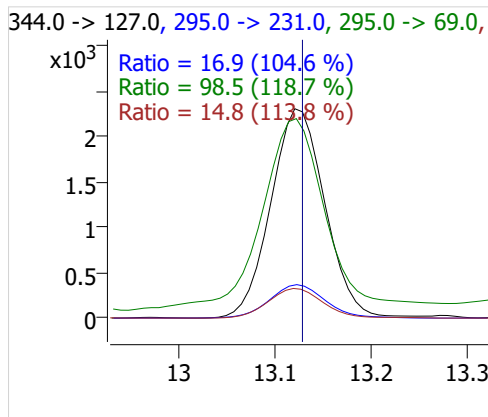
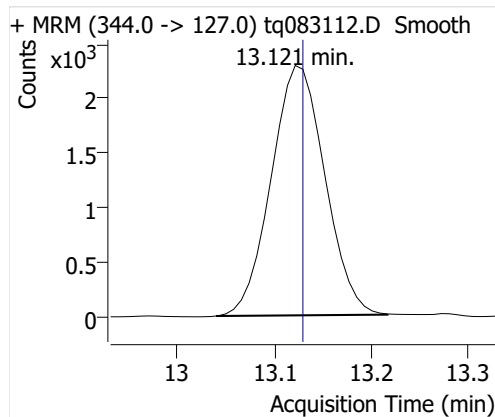
5:2sFTOH



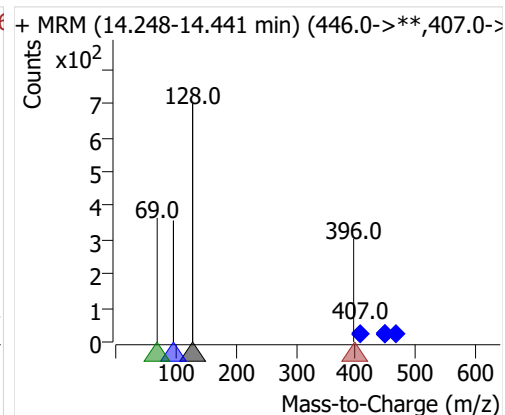
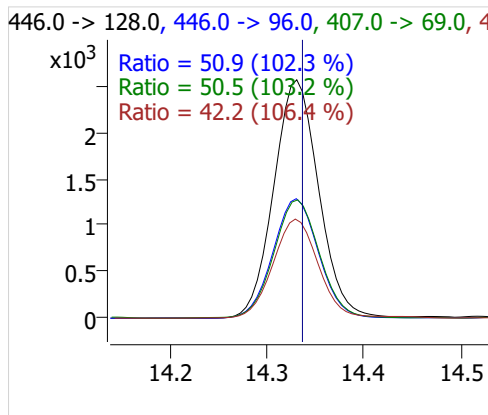
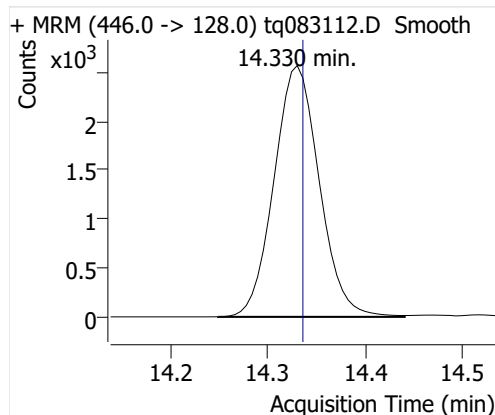
7:2sFTOH



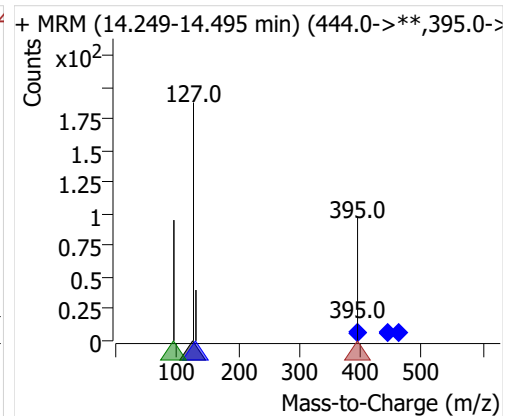
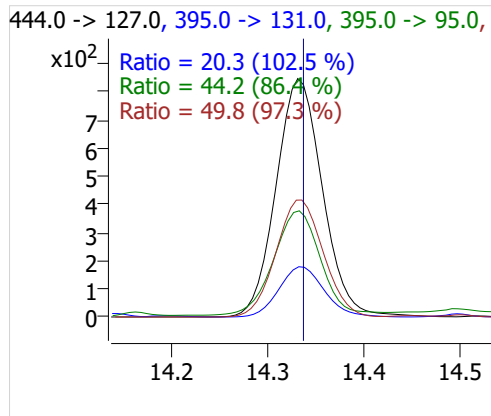
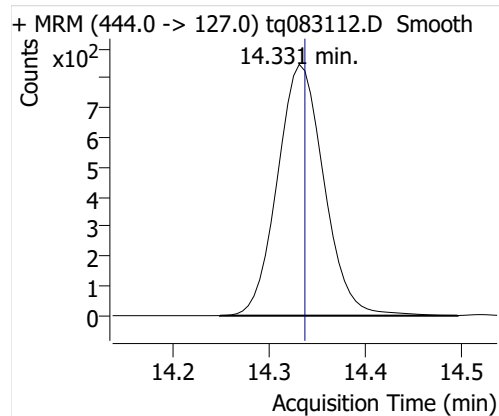
6:2 FTOH



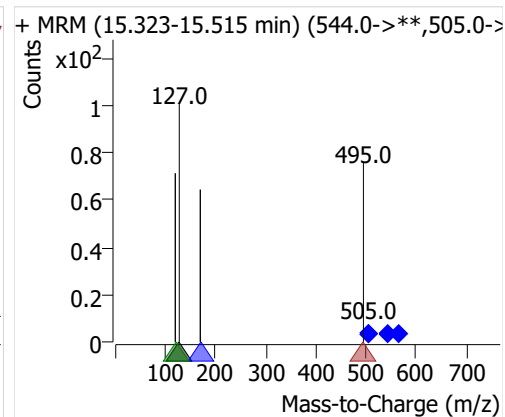
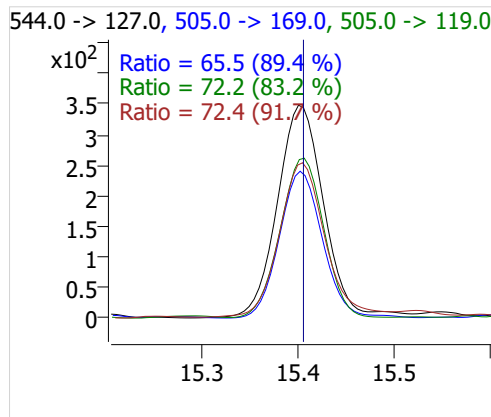
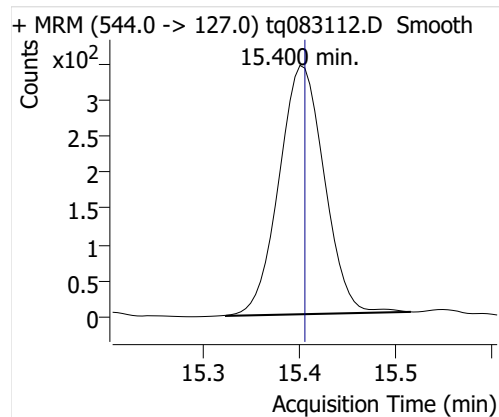
8:2 FTOH-C13



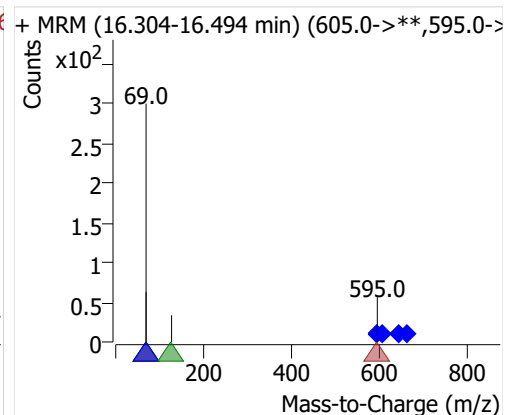
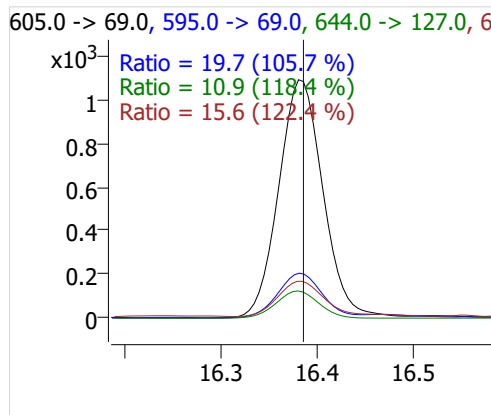
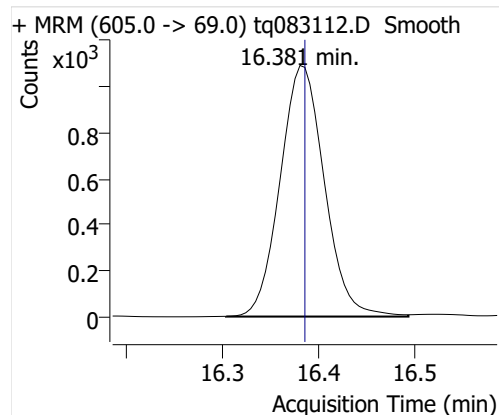
8:2 FTOH



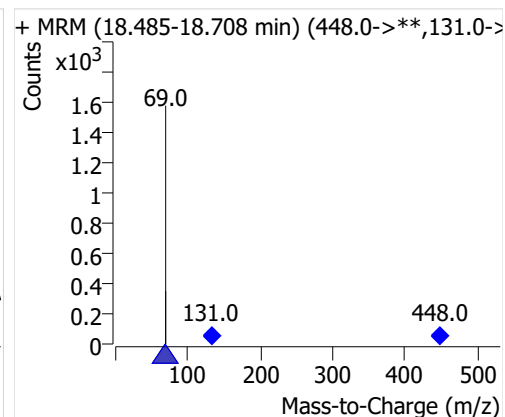
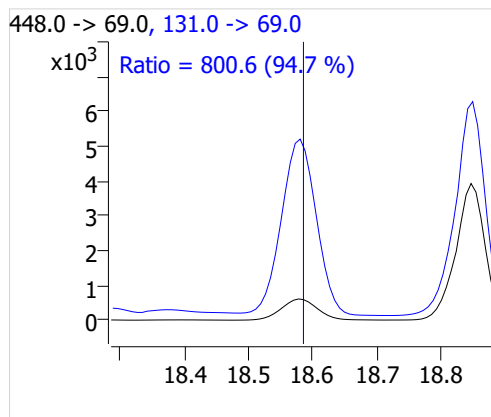
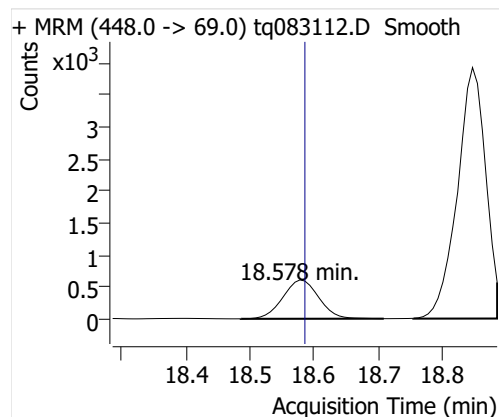
10:2 FTOH



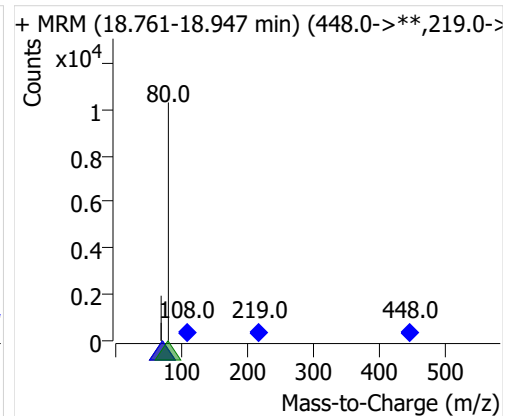
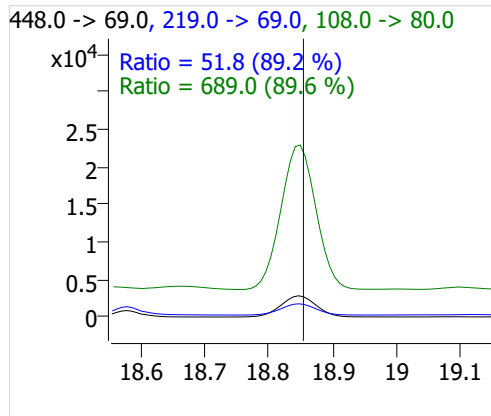
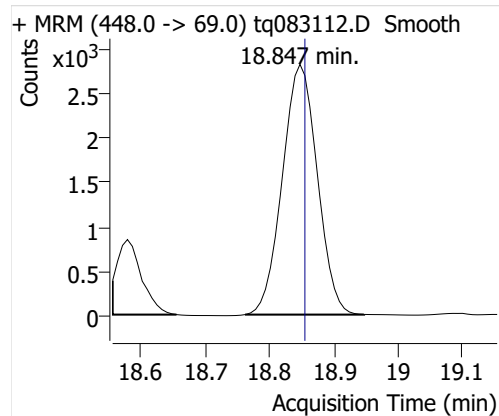
12:2 FTOH



NMeFOSA



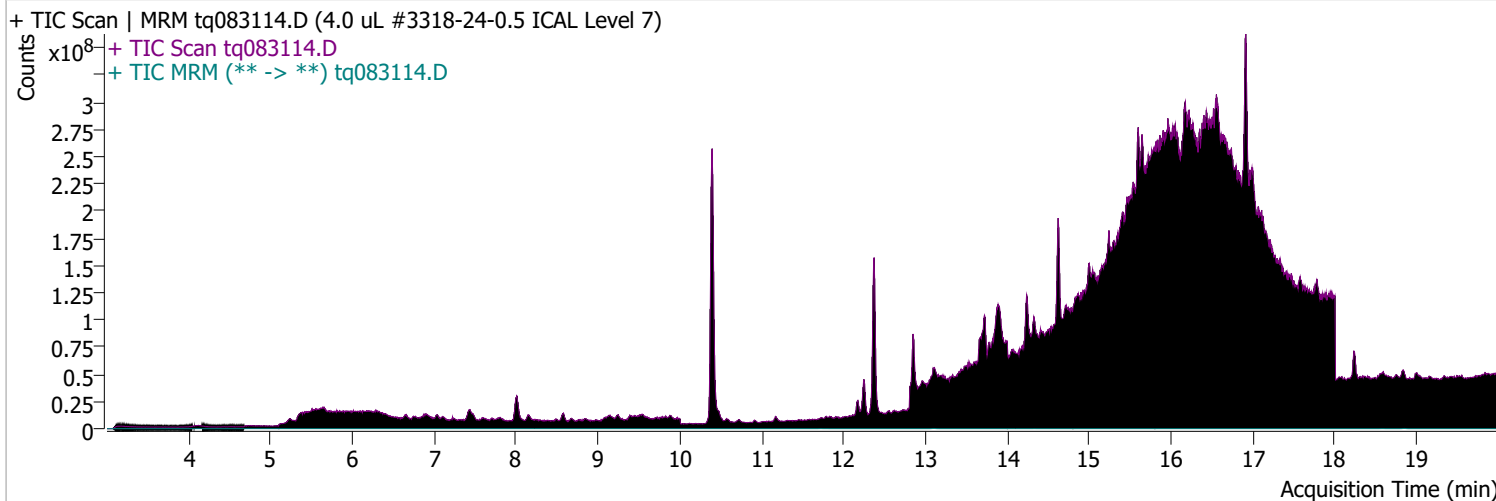
NETFOSA



Quantitative Analysis Sample Report

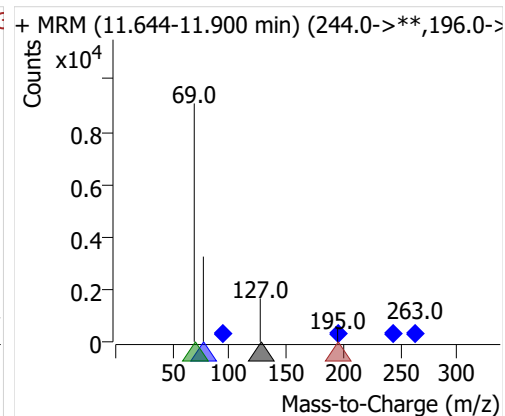
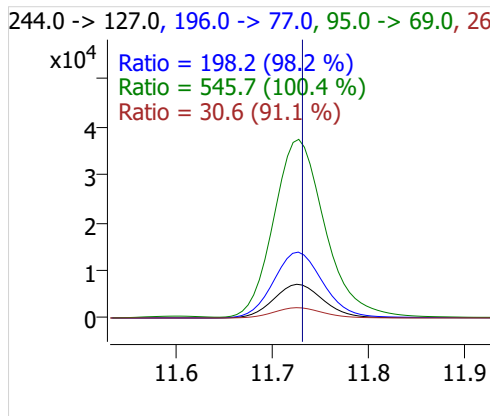
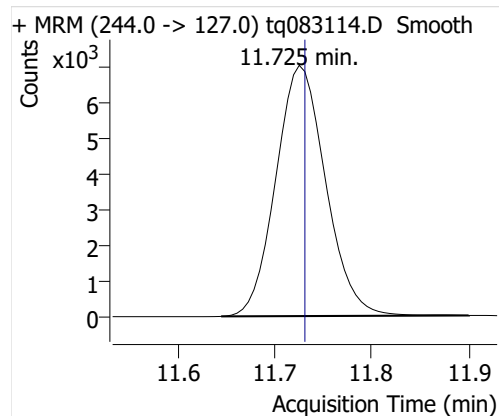
Batch Path D:\MassHunter\GCMS\1\data\31aug22a\QuantResults\31aug22.batch.bin
Analysis Time 9/6/2022 9:11 AM **Analyst Name** DESKTOP-R0LAL7E\analyst
Report Time 9/6/2022 11:41:23 AM **Reporter Name** DESKTOP-R0LAL7E\analyst
Last Calib Update 9/6/2022 9:11 AM **Batch State** Processed
Quant Batch Version 10.1 **Quant Report Version** 10.1
Acq. Time 8/31/2022 6:33 PM **Data File** tq083114.D
Sample Type Cal **Sample Name** 4.0 uL #3318-24-0.5 ICAL Level 7
Dilution 1 **Acq. Method** tq22m0831

Sample Chromatogram

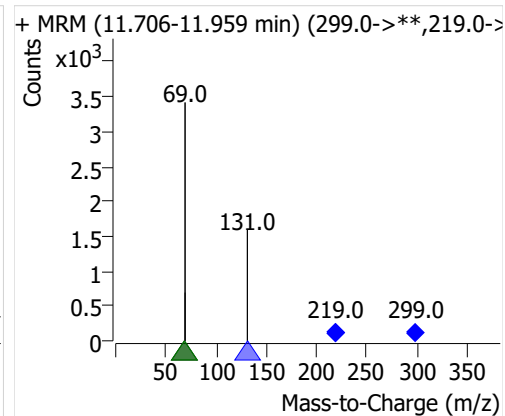
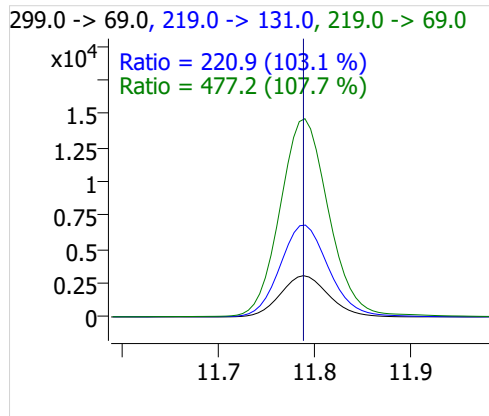
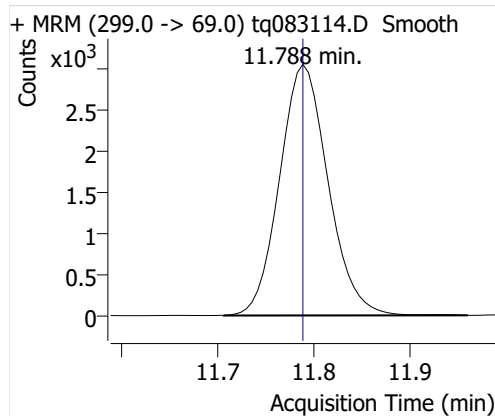


Compound	ISTD	RT	Resp.	ISTD Resp.	Resp. Ratio	Final Conc	Units
4:2 FTOH	6:2 FTOH-C13	11.725	25233	30240	0.8344	2.0057	ng
5:2sFTOH	6:2 FTOH-C13	11.788	10631	30240	0.3516	1.9930	ng
7:2sFTOH	6:2 FTOH-C13	13.095	23632	30240	0.7815	2.0690	ng
6:2 FTOH	6:2 FTOH-C13	13.129	46467	30240	1.5366	1.9930	ng
8:2 FTOH-C13	6:2 FTOH-C13	14.330	8826	30240	0.2919	0.9445	ng
8:2 FTOH	6:2 FTOH-C13	14.331	12571	30240	0.4157	1.8493	ng
10:2 FTOH	6:2 FTOH-C13	15.405	4201	30240	0.1389	1.8479	ng
12:2 FTOH	6:2 FTOH-C13	16.386	16000	30240	0.5291	1.8569	ng
NMeFOSA	6:2 FTOH-C13	18.585	9988	30240	0.3303	1.8407	ng
NEtFOSA	6:2 FTOH-C13	18.847	45158	30240	1.4933	1.8595	ng

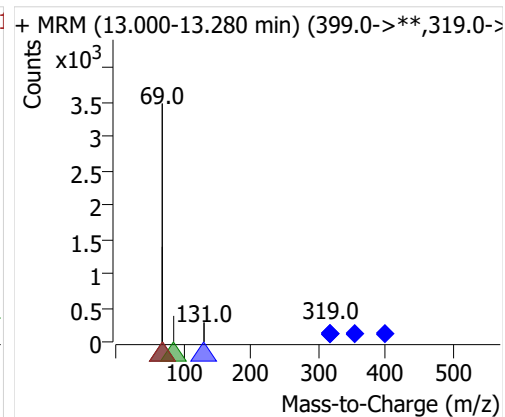
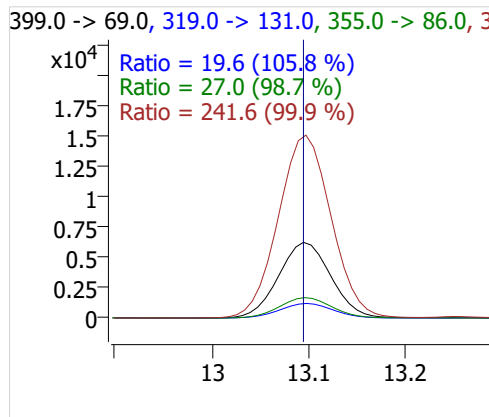
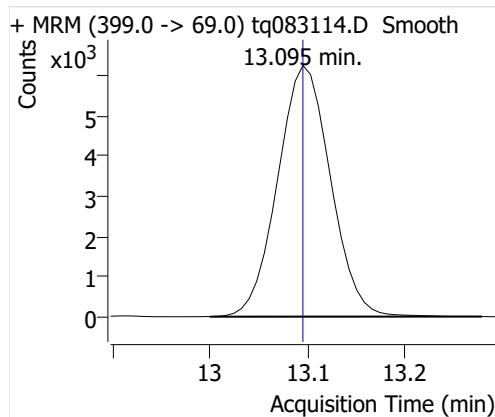
4:2 FTOH



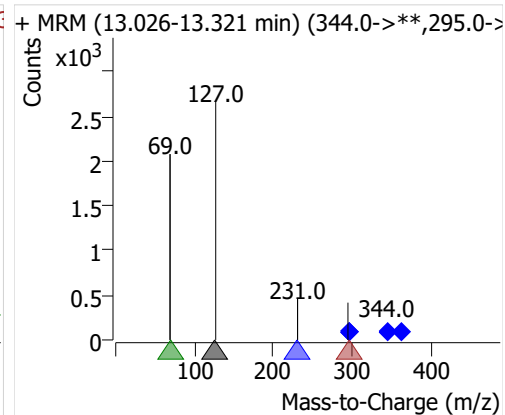
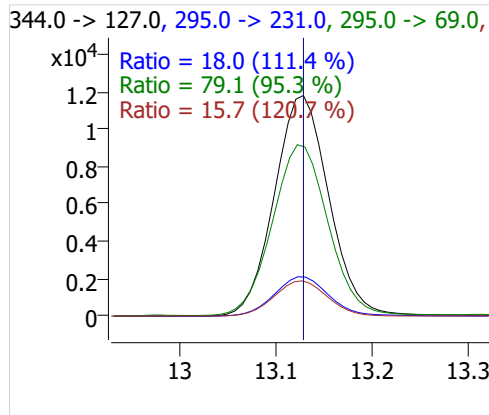
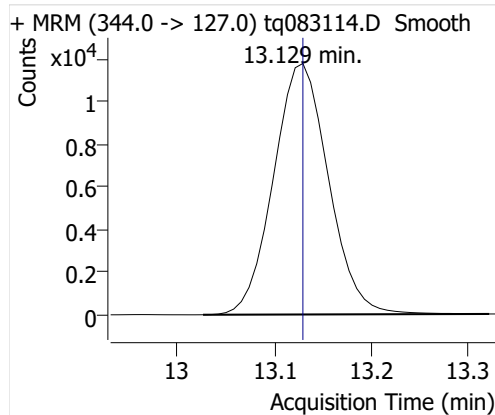
5:2sFTOH



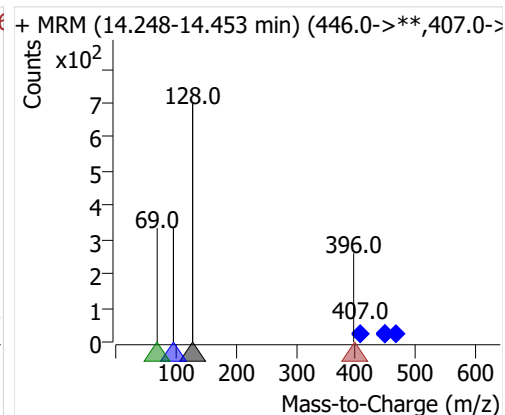
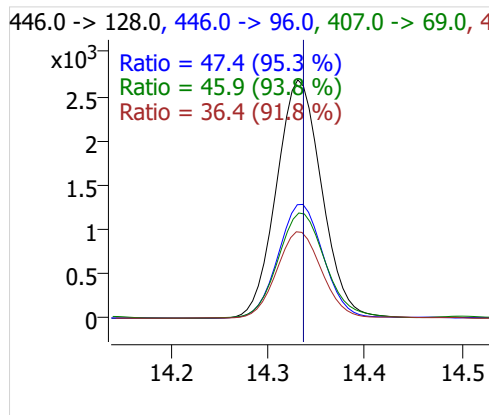
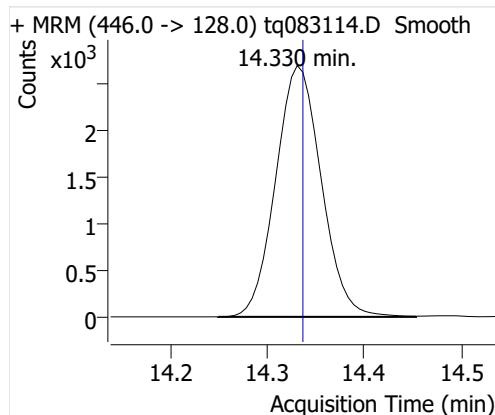
7:2sFTOH



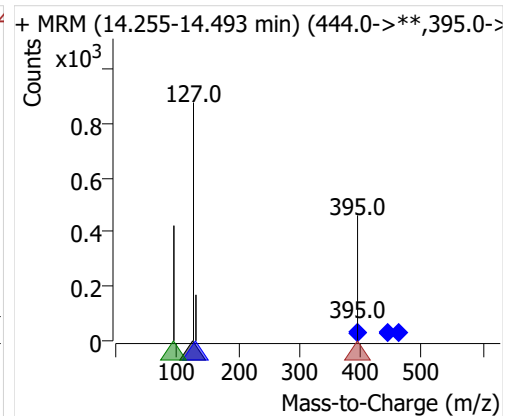
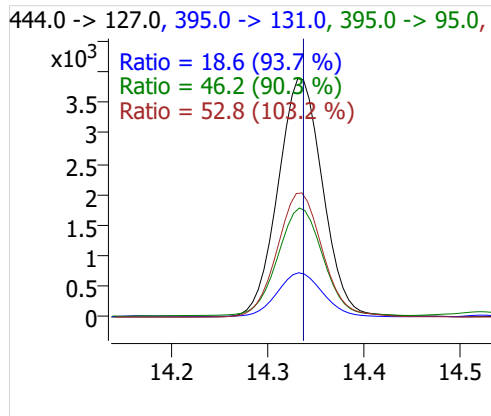
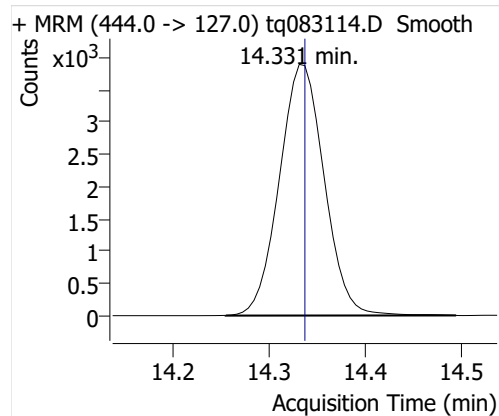
6:2 FTOH



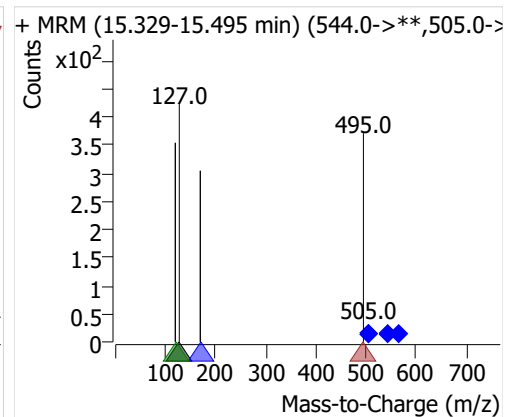
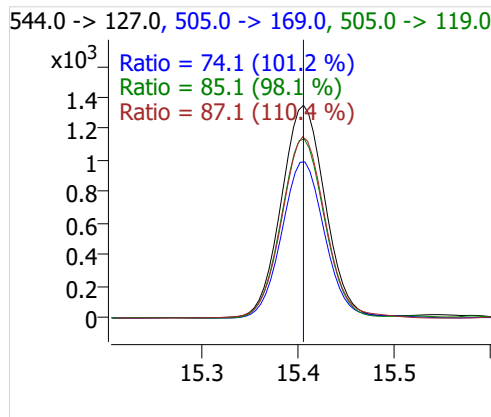
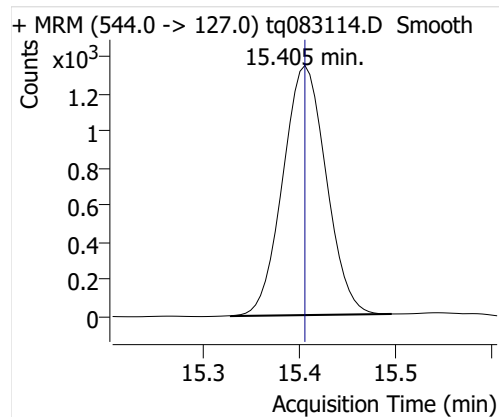
8:2 FTOH-C13



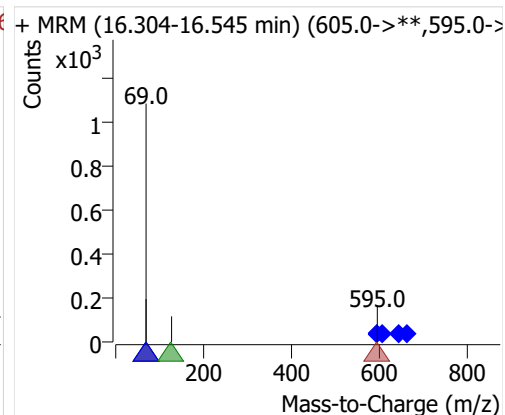
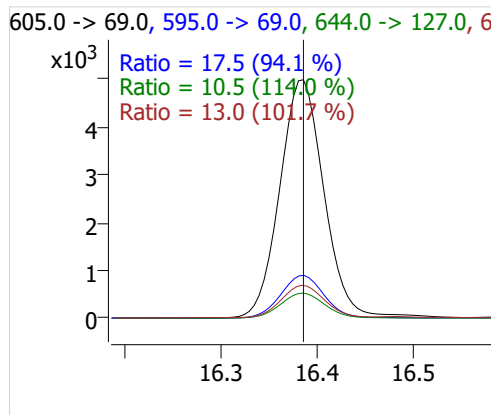
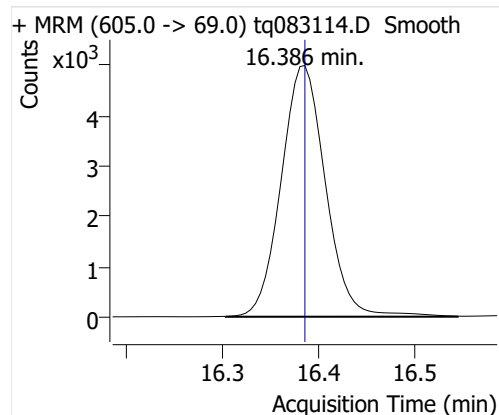
8:2 FTOH



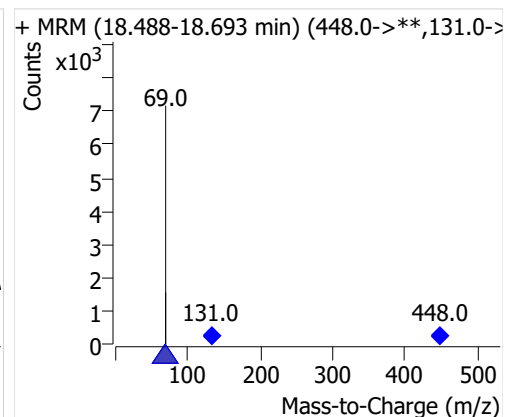
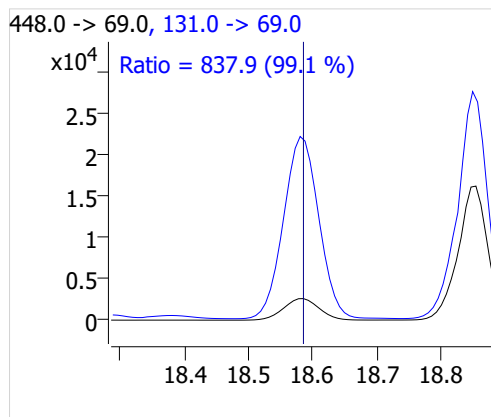
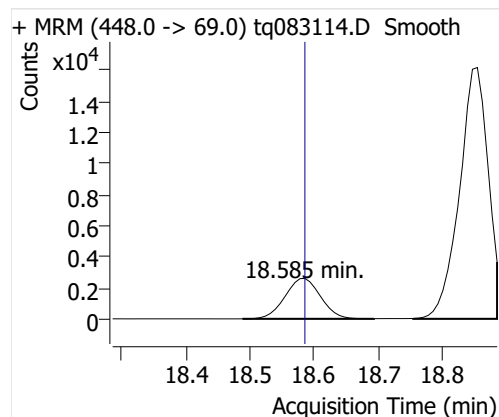
10:2 FTOH



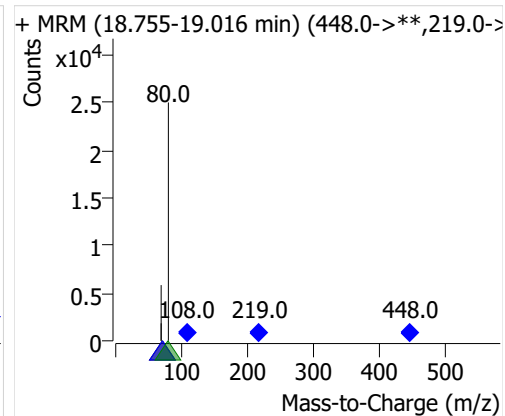
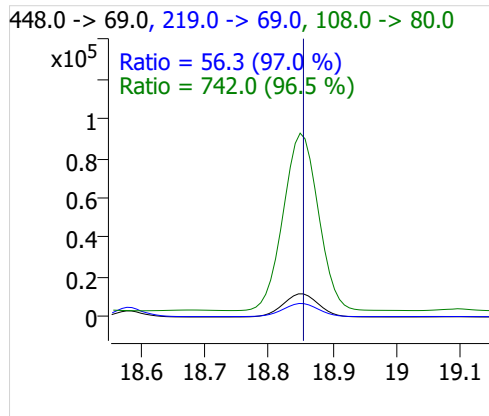
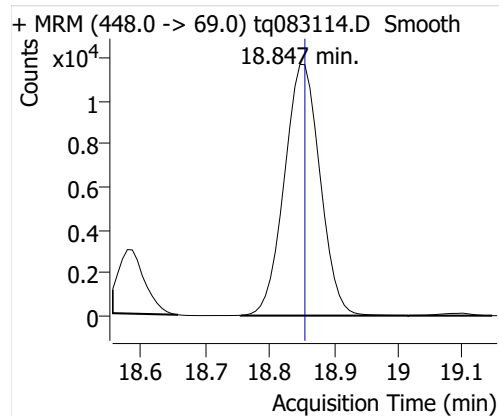
12:2 FTOH



NMeFOSA



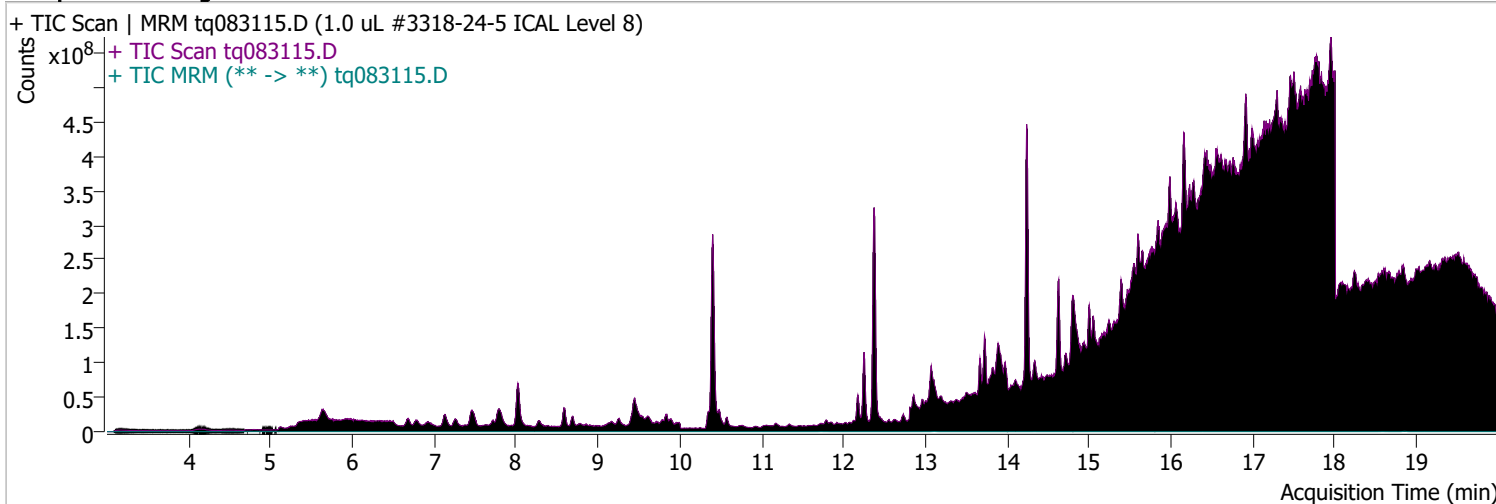
NETFOSA



Quantitative Analysis Sample Report

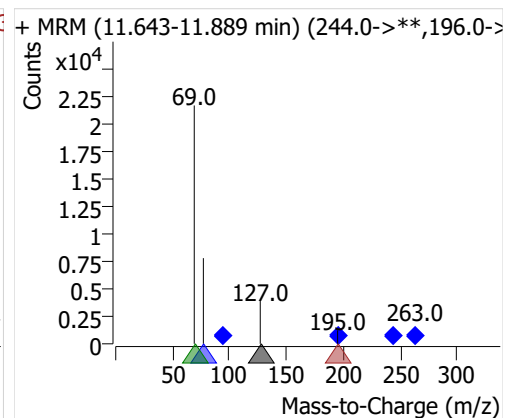
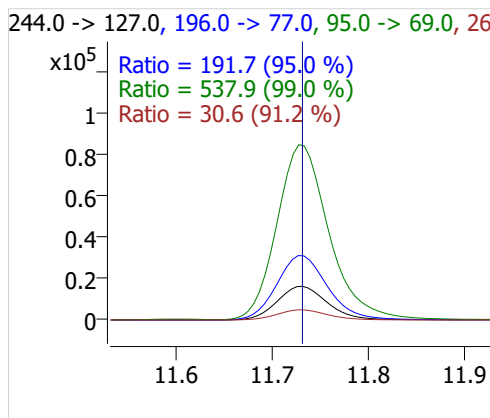
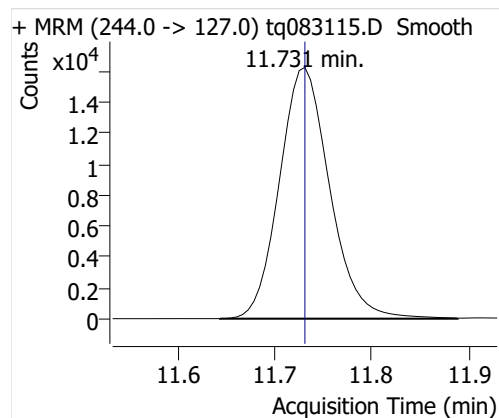
Batch Path D:\MassHunter\GCMS\1\data\31aug22a\QuantResults\31aug22.batch.bin
Analysis Time 9/6/2022 9:11 AM **Analyst Name** DESKTOP-R0LAL7E\analyst
Report Time 9/6/2022 11:41:24 AM **Reporter Name** DESKTOP-R0LAL7E\analyst
Last Calib Update 9/6/2022 9:11 AM **Batch State** Processed
Quant Batch Version 10.1 **Quant Report Version** 10.1
Acq. Time 8/31/2022 7:13 PM **Data File** tq083115.D
Sample Type Cal **Sample Name** 1.0 uL #3318-24-5 ICAL Level 8
Dilution 1 **Acq. Method** tq22m0831

Sample Chromatogram

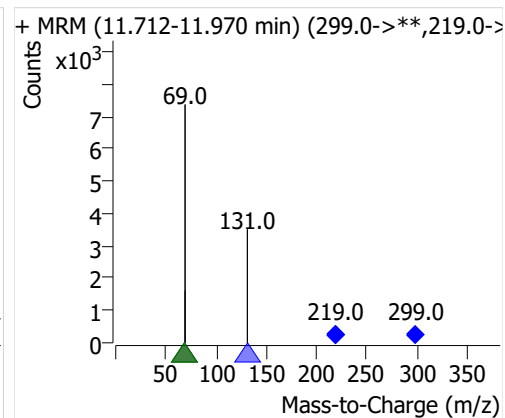
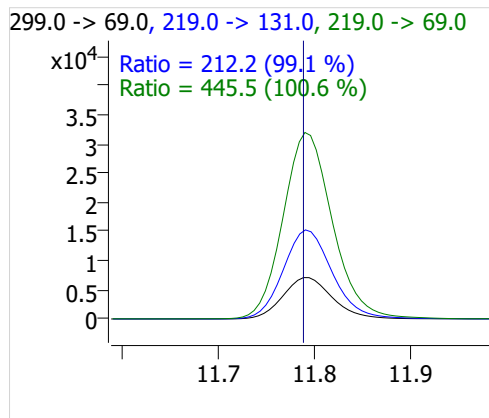
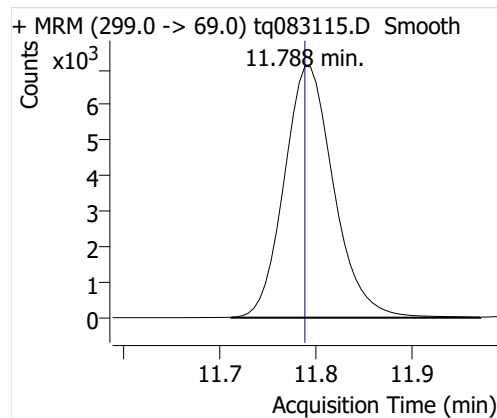


Compound	ISTD	RT	Resp.	ISTD Resp.	Resp. Ratio	Final Conc	Units
4:2 FTOH	6:2 FTOH-C13	11.731	58876	27497	2.1412	5.1467	ng
5:2sFTOH	6:2 FTOH-C13	11.788	25485	27497	0.9268	5.2542	ng
7:2sFTOH	6:2 FTOH-C13	13.095	50719	27497	1.8445	4.8833	ng
6:2 FTOH	6:2 FTOH-C13	13.129	107217	27497	3.8993	5.0574	ng
8:2 FTOH-C13	6:2 FTOH-C13	14.336	9317	27497	0.3388	1.0965	ng
8:2 FTOH	6:2 FTOH-C13	14.337	31275	27497	1.1374	5.0600	ng
10:2 FTOH	6:2 FTOH-C13	15.405	11439	27497	0.4160	5.5339	ng
12:2 FTOH	6:2 FTOH-C13	16.386	42869	27497	1.5591	5.4717	ng
NMeFOSA	6:2 FTOH-C13	18.585	28092	27497	1.0216	5.6934	ng
NEtFOSA	6:2 FTOH-C13	18.854	123197	27497	4.4804	5.5790	ng

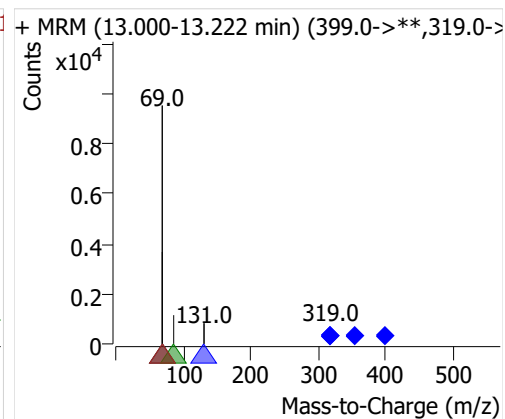
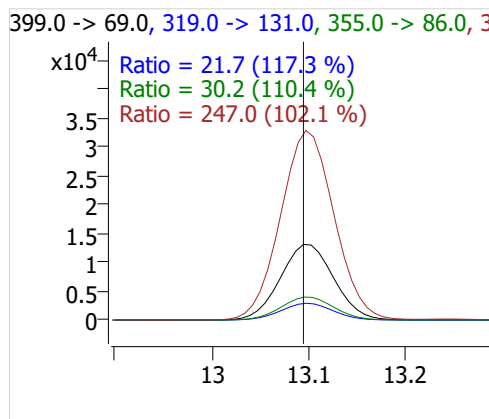
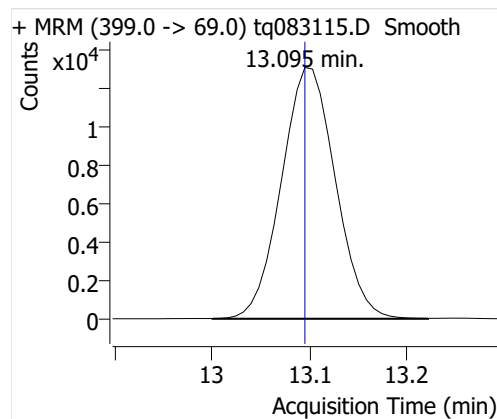
4:2 FTOH



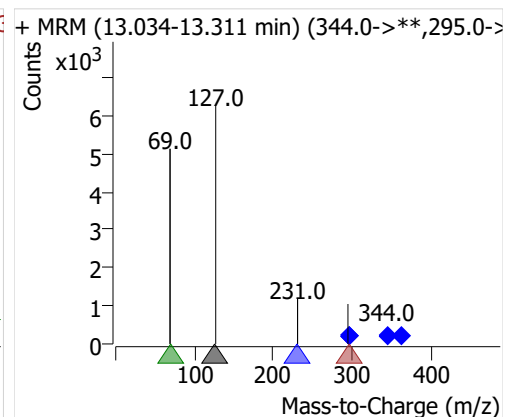
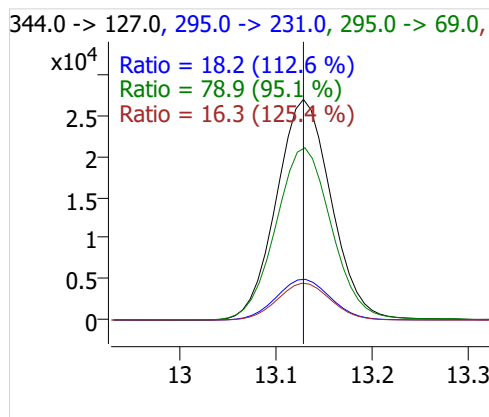
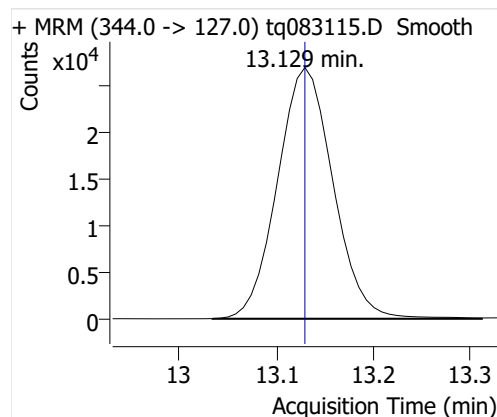
5:2sFTOH



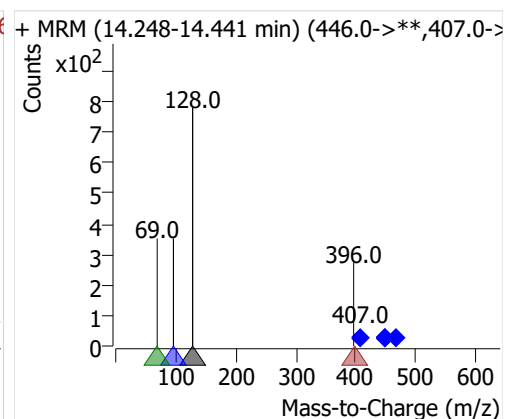
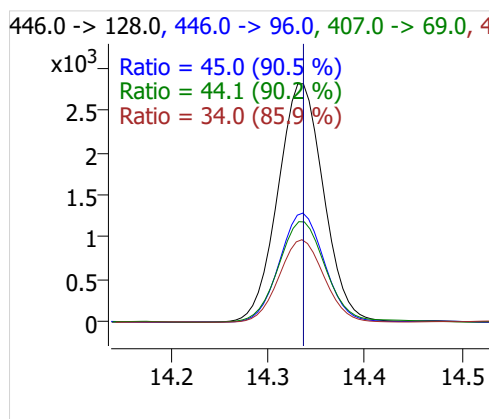
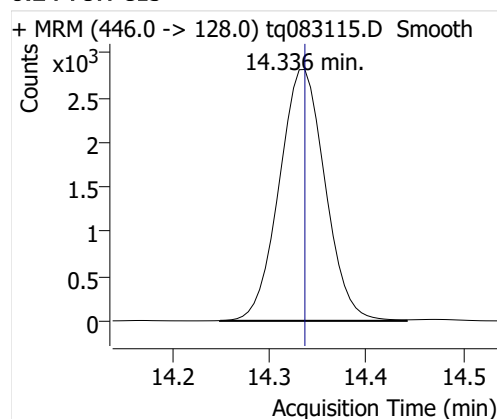
7:2sFTOH



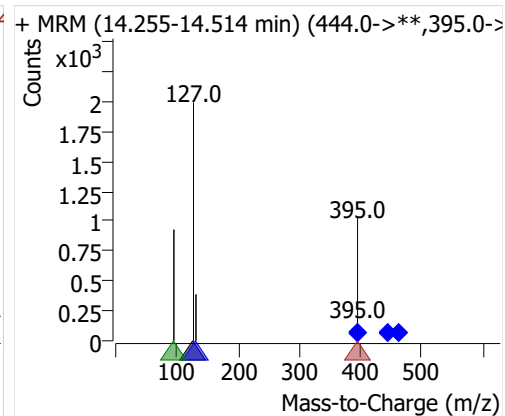
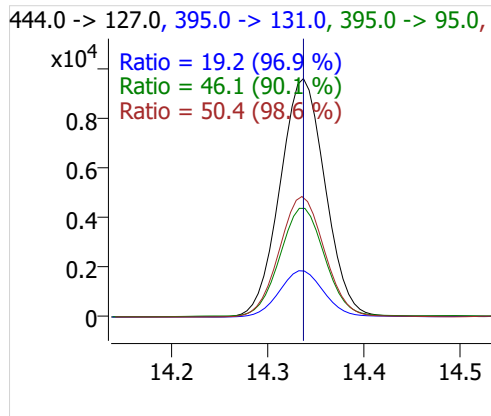
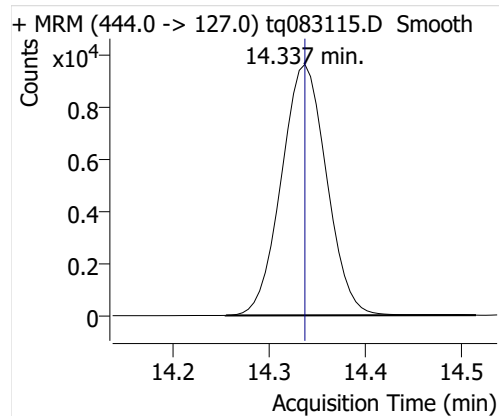
6:2 FTOH



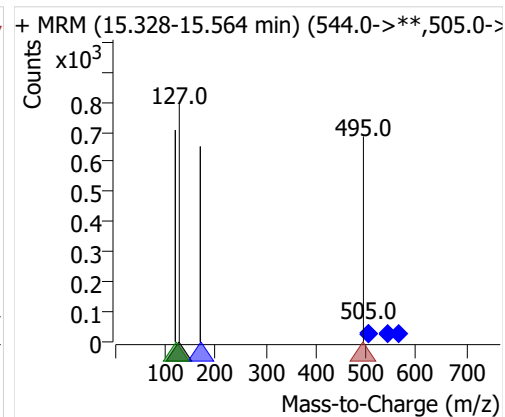
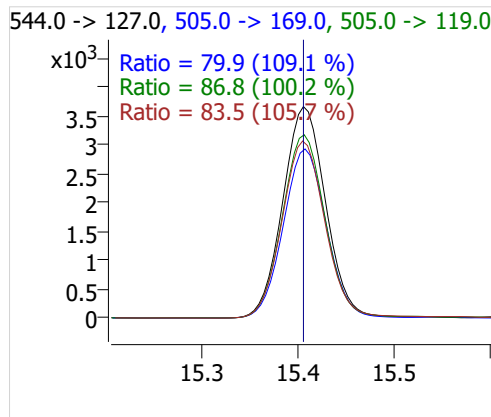
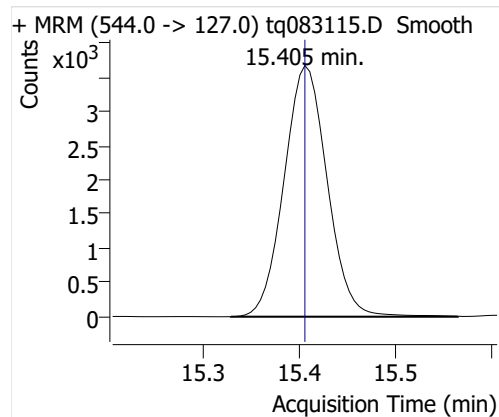
8:2 FTOH-C13



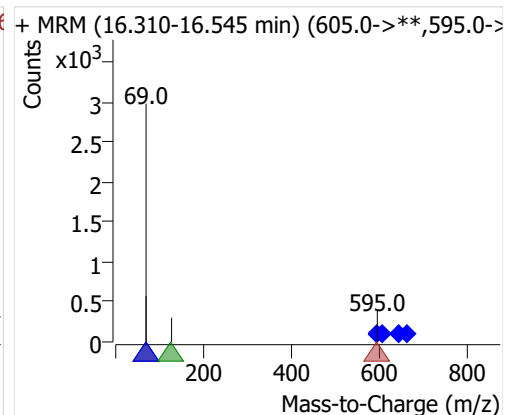
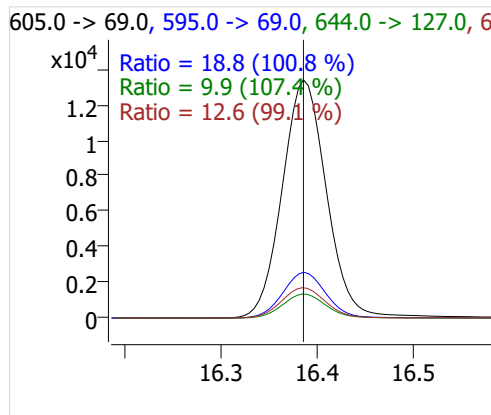
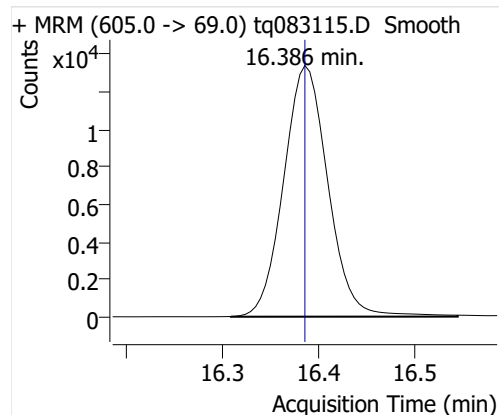
8:2 FTOH



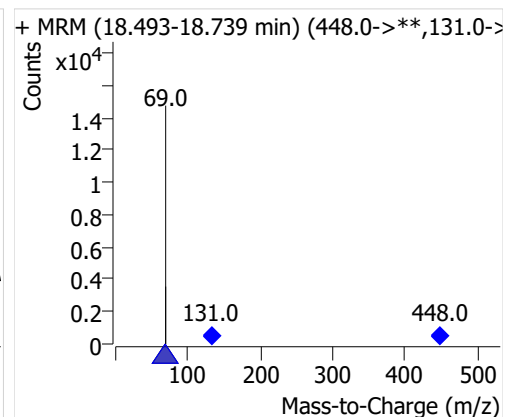
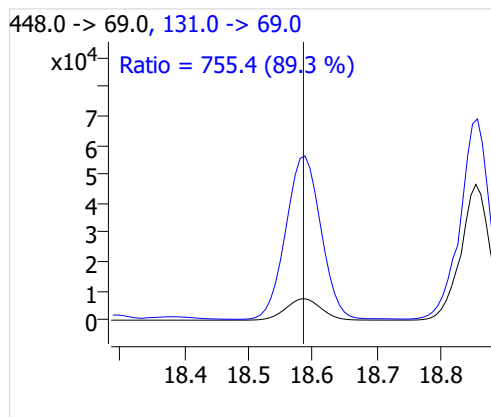
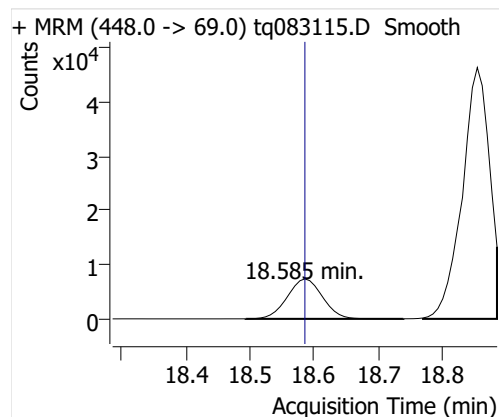
10:2 FTOH



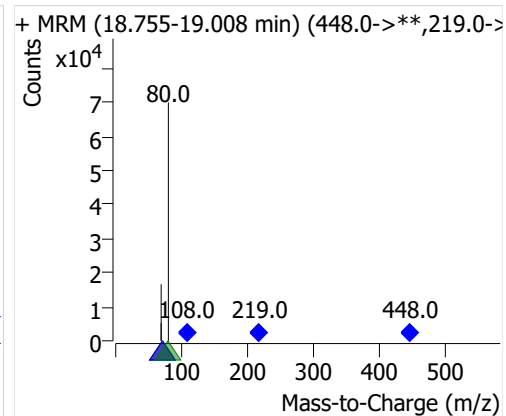
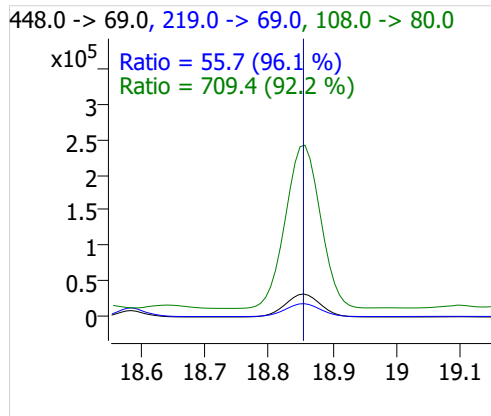
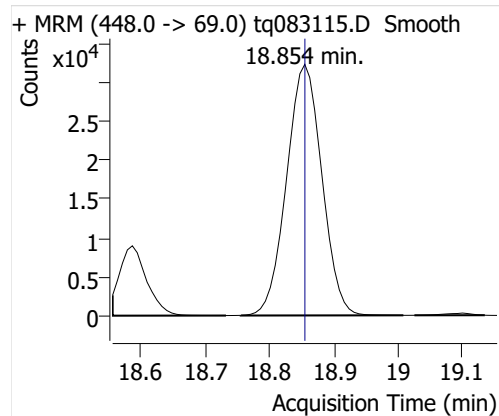
12:2 FTOH



NMeFOSA



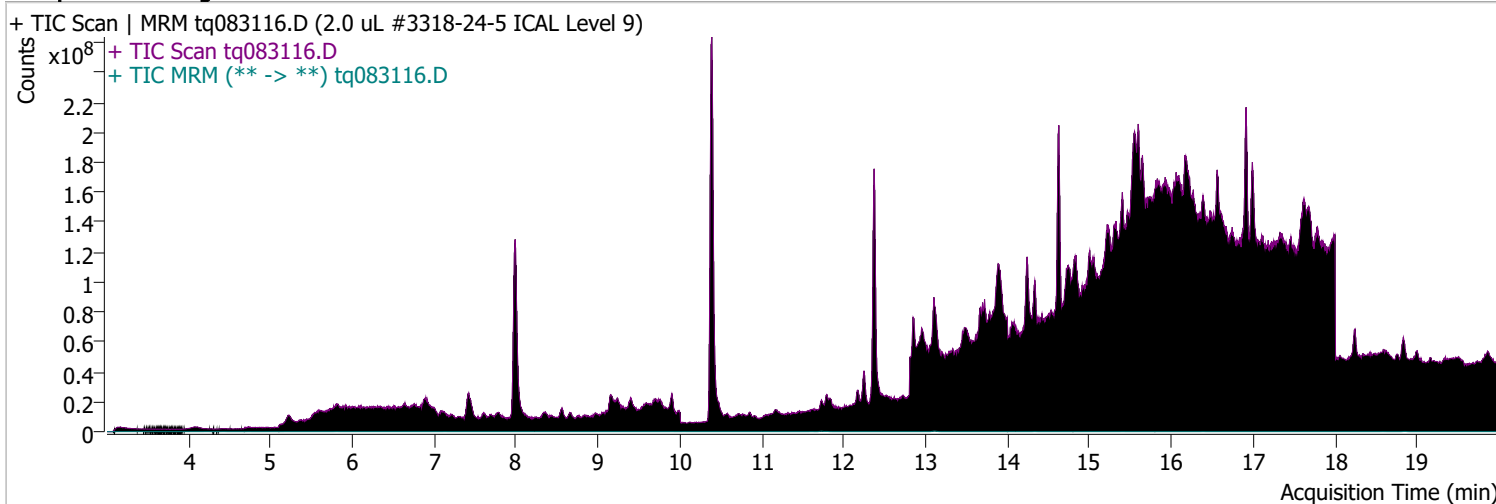
NETFOSA



Quantitative Analysis Sample Report

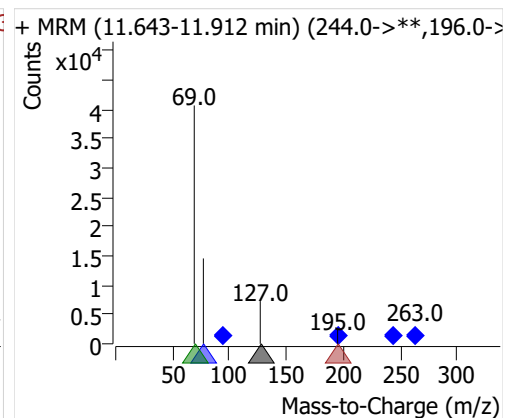
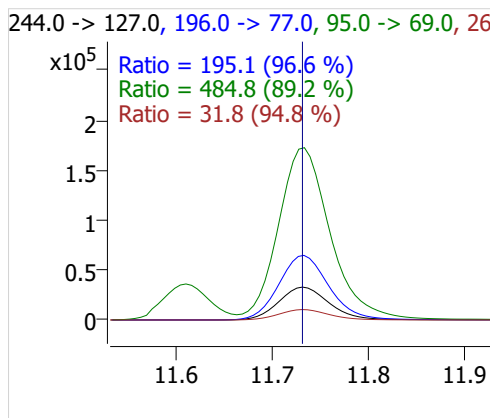
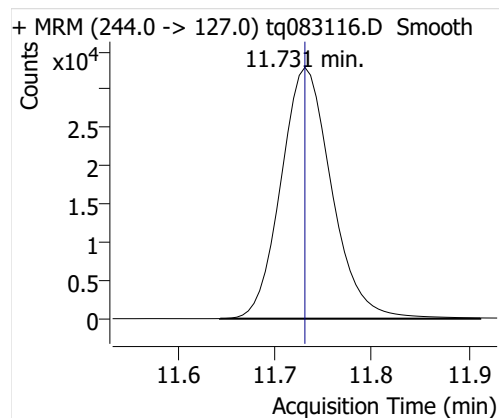
Batch Path D:\MassHunter\GCMS\1\data\31aug22a\QuantResults\31aug22.batch.bin
Analysis Time 9/6/2022 9:11 AM **Analyst Name** DESKTOP-R0LAL7E\analyst
Report Time 9/6/2022 11:41:25 AM **Reporter Name** DESKTOP-R0LAL7E\analyst
Last Calib Update 9/6/2022 9:11 AM **Batch State** Processed
Quant Batch Version 10.1 **Quant Report Version** 10.1
Acq. Time 8/31/2022 7:54 PM **Data File** tq083116.D
Sample Type Cal **Sample Name** 2.0 uL #3318-24-5 ICAL Level 9
Dilution 1 **Acq. Method** tq22m0831

Sample Chromatogram

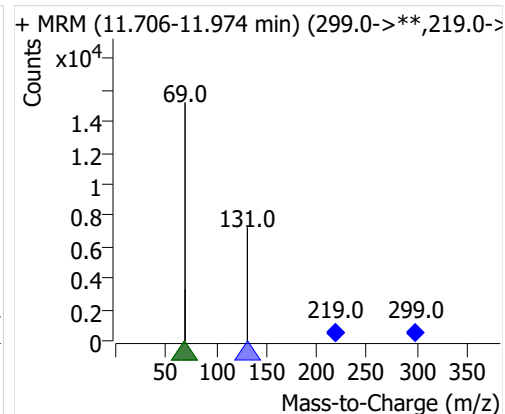
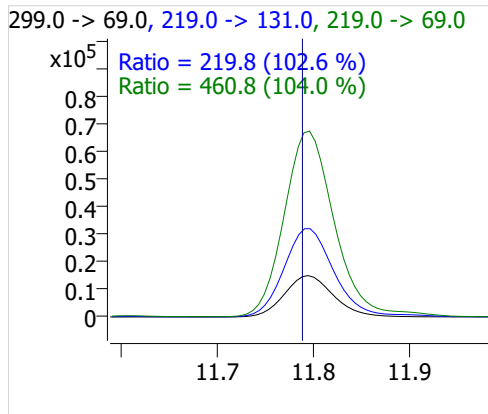
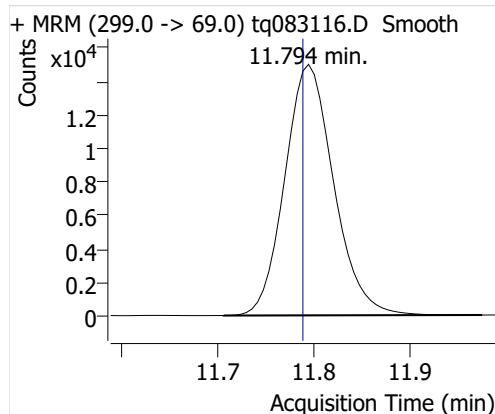


Compound	ISTD	RT	Resp.	ISTD Resp.	Resp. Ratio	Final Conc	Units
4:2 FTOH	6:2 FTOH-C13	11.731	120406	27898	4.3159	10.3739	ng
5:2sFTOH	6:2 FTOH-C13	11.794	52850	27898	1.8944	10.7390	ng
7:2sFTOH	6:2 FTOH-C13	13.103	115192	27898	4.1290	10.9313	ng
6:2 FTOH	6:2 FTOH-C13	13.129	224572	27898	8.0496	10.4405	ng
8:2 FTOH-C13	6:2 FTOH-C13	14.336	9000	27898	0.3226	1.0439	ng
8:2 FTOH	6:2 FTOH-C13	14.337	57648	27898	2.0664	9.1925	ng
10:2 FTOH	6:2 FTOH-C13	15.411	20470	27898	0.7337	9.7603	ng
12:2 FTOH	6:2 FTOH-C13	16.391	67911	27898	2.4342	8.5431	ng
NMeFOSA	6:2 FTOH-C13	18.585	6721	27898	0.2409	1.3426	ng
NEtFOSA	6:2 FTOH-C13	18.854	34552	27898	1.2385	1.5422	ng

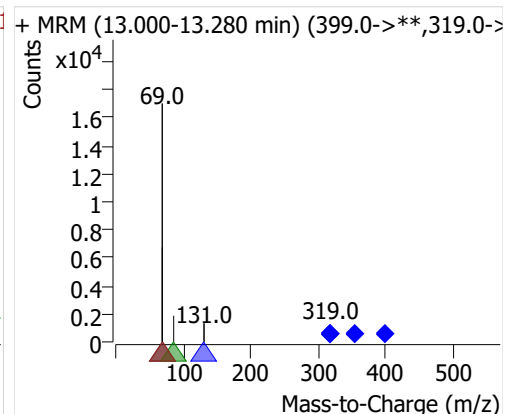
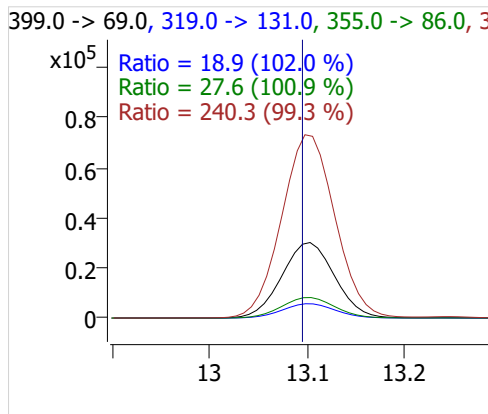
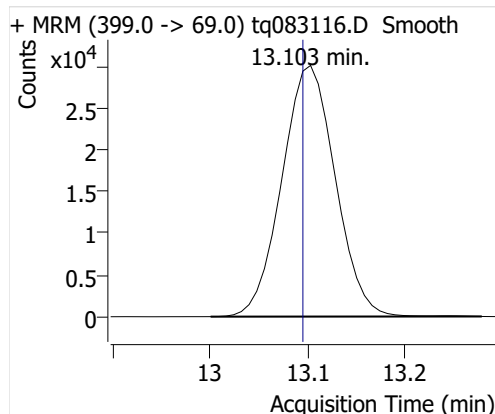
4:2 FTOH



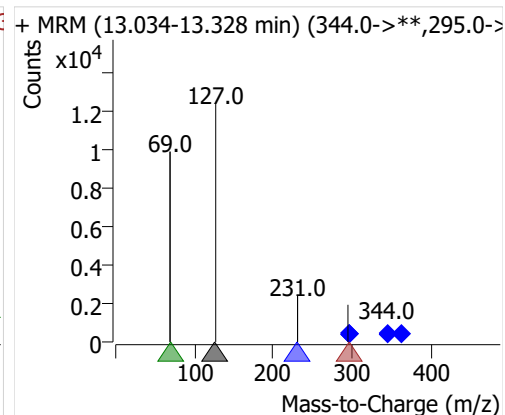
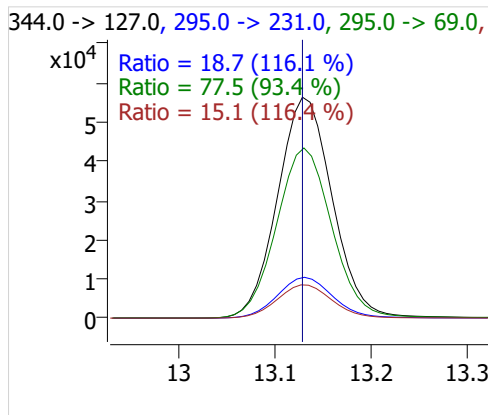
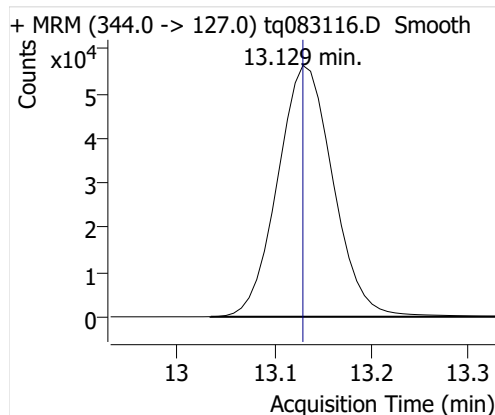
5:2sFTOH



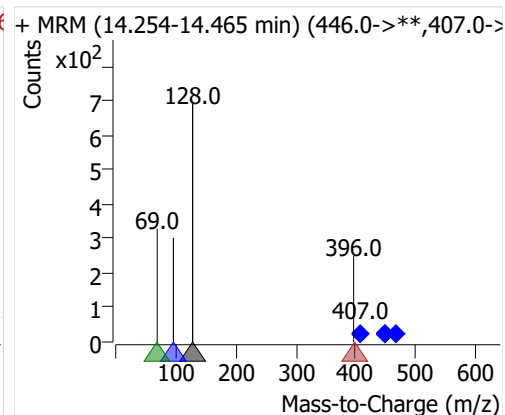
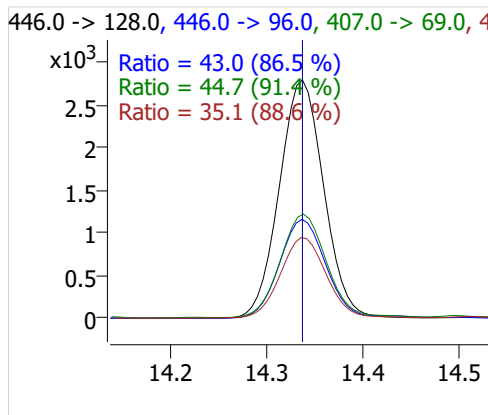
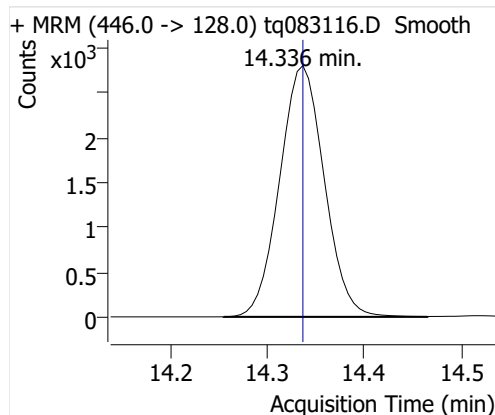
7:2sFTOH



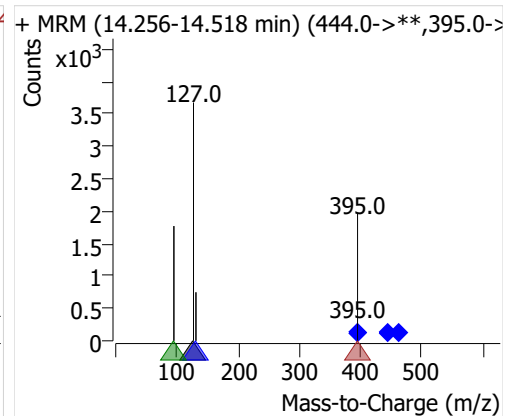
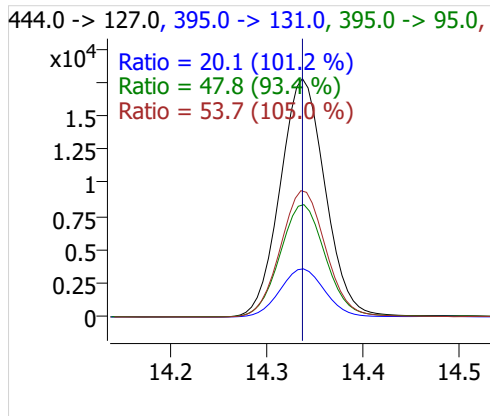
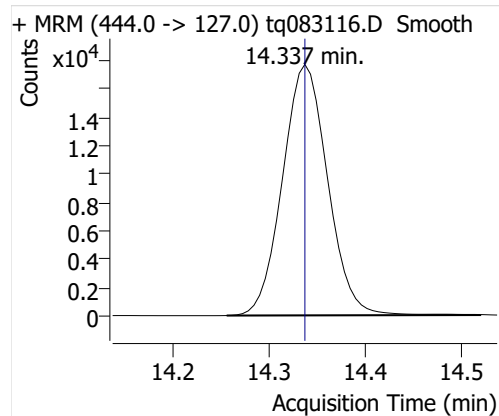
6:2 FTOH



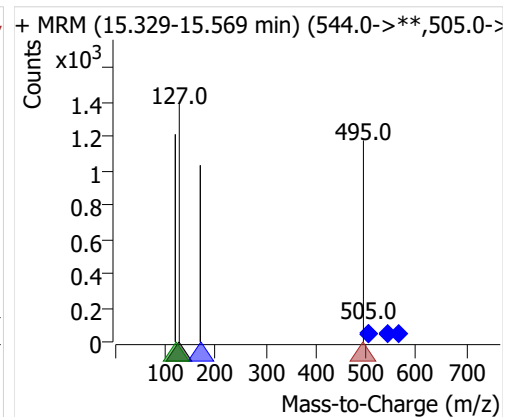
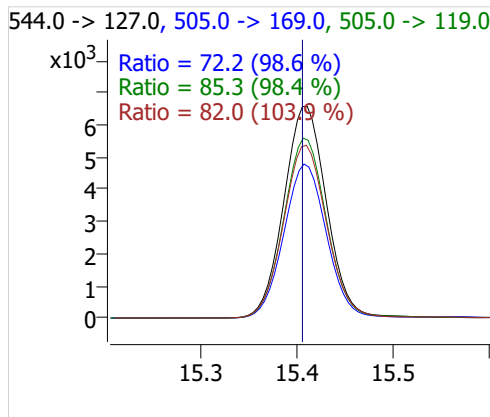
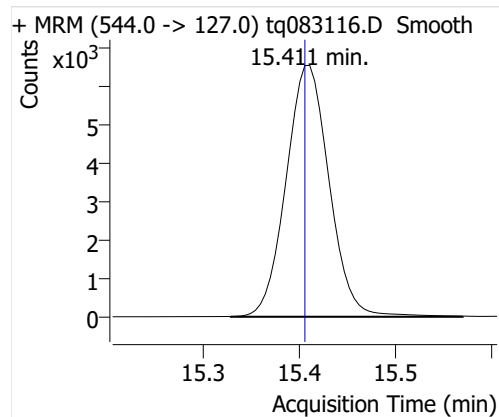
8:2 FTOH-C13



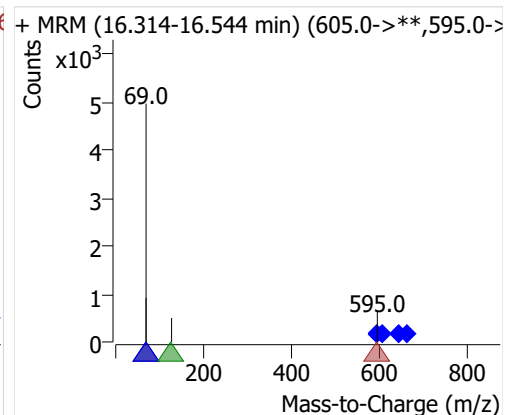
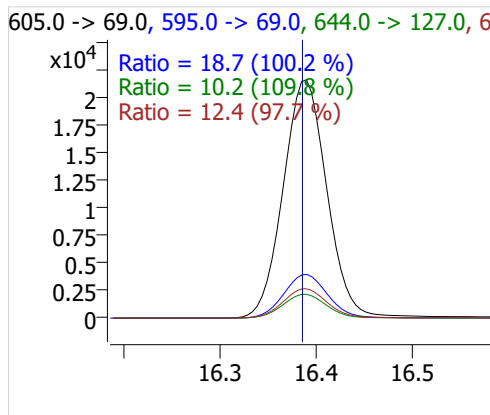
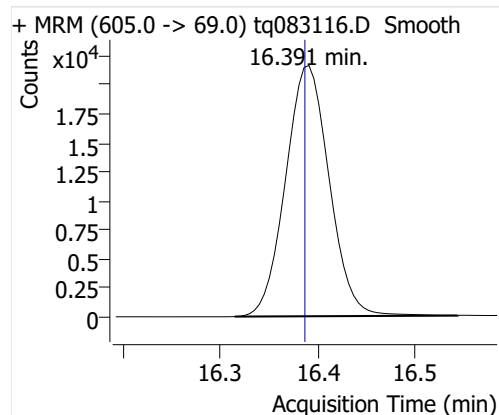
8:2 FTOH



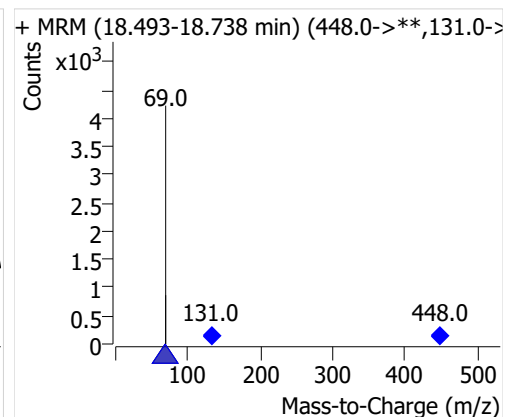
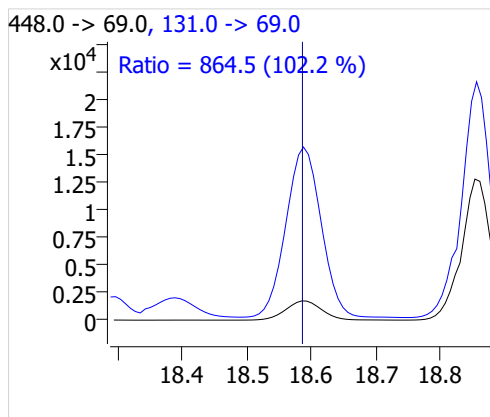
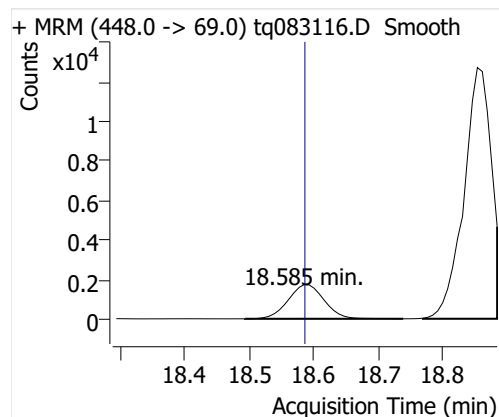
10:2 FTOH



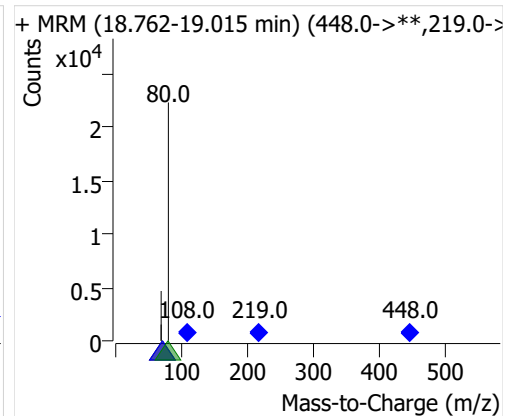
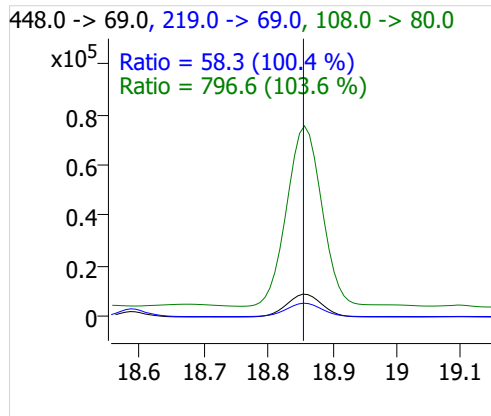
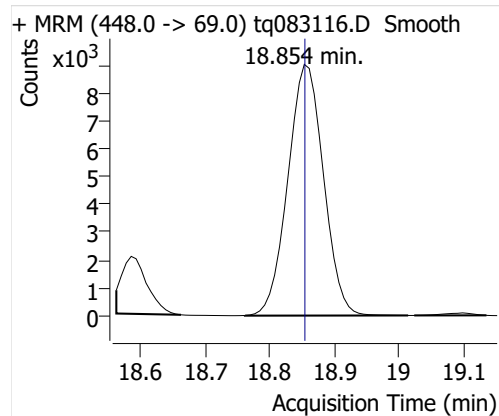
12:2 FTOH



NMeFOSA



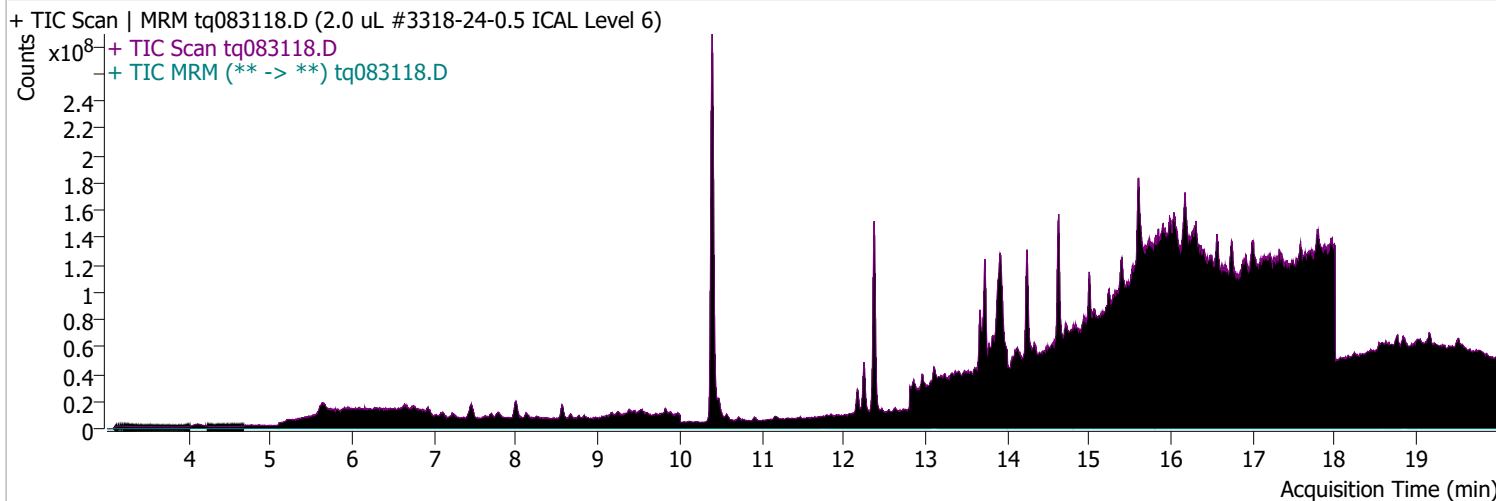
NETFOSA



Quantitative Analysis Sample Report

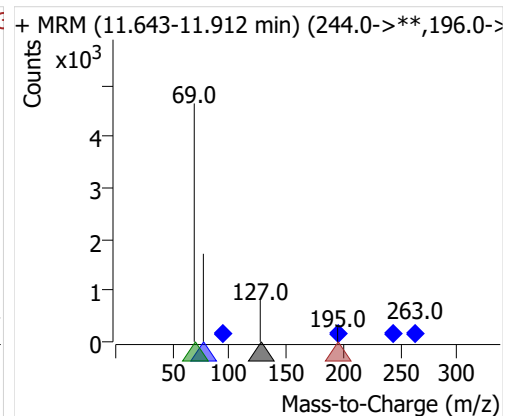
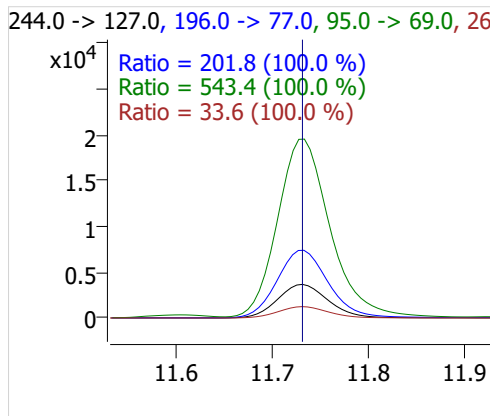
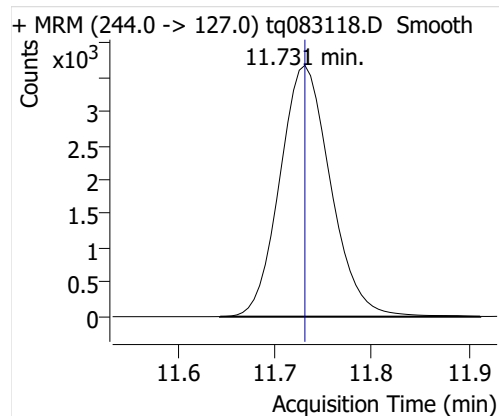
Batch Path D:\MassHunter\GCMS\1\data\31aug22a\QuantResults\31aug22.batch.bin
Analysis Time 9/6/2022 9:11 AM **Analyst Name** DESKTOP-R0LAL7E\analyst
Report Time 9/6/2022 11:41:26 AM **Reporter Name** DESKTOP-R0LAL7E\analyst
Last Calib Update 9/6/2022 9:11 AM **Batch State** Processed
Quant Batch Version 10.1 **Quant Report Version** 10.1
Acq. Time 9/1/2022 8:56 AM **Data File** tq083118.D
Sample Type Cal **Sample Name** 2.0 uL #3318-24-0.5 ICAL Level 6
Dilution 1 **Acq. Method** tq22m0831

Sample Chromatogram

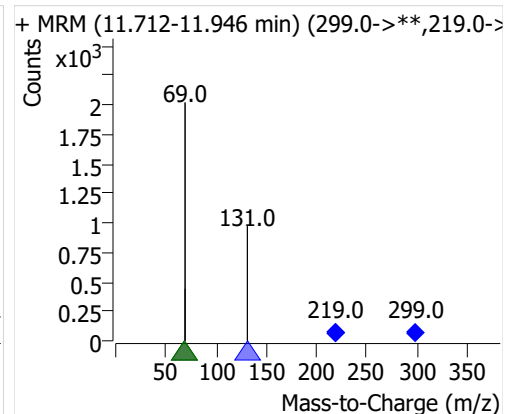
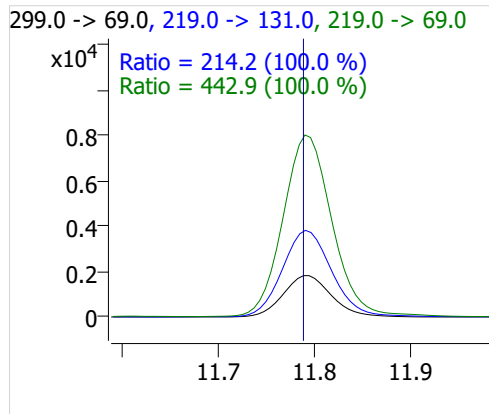
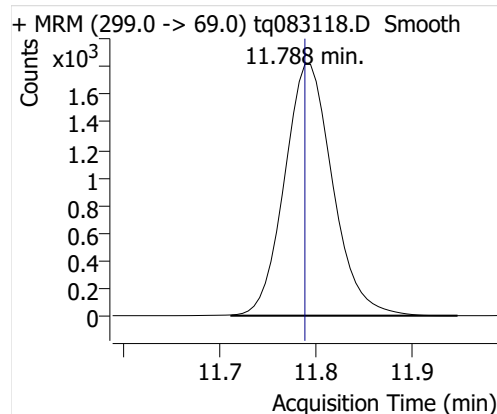


Compound	ISTD	RT	Resp.	ISTD Resp.	Resp. Ratio	Final Conc	Units
4:2 FTOH	6:2 FTOH-C13	11.731	13450	30580	0.4398	1.0572	ng
5:2sFTOH	6:2 FTOH-C13	11.788	6339	30580	0.2073	1.1751	ng
7:2sFTOH	6:2 FTOH-C13	13.095	12001	30580	0.3924	1.0389	ng
6:2 FTOH	6:2 FTOH-C13	13.129	24933	30580	0.8153	1.0575	ng
8:2 FTOH-C13	6:2 FTOH-C13	14.336	9113	30580	0.2980	0.9644	ng
8:2 FTOH	6:2 FTOH-C13	14.337	6283	30580	0.2055	0.9141	ng
10:2 FTOH	6:2 FTOH-C13	15.405	2390	30580	0.0782	1.0396	ng
12:2 FTOH	6:2 FTOH-C13	16.386	8427	30580	0.2756	0.9671	ng
NMeFOSA	6:2 FTOH-C13	18.585	4504	30580	0.1473	0.8208	ng
NEtFOSA	6:2 FTOH-C13	18.855	20527	30580	0.6712	0.8358	ng

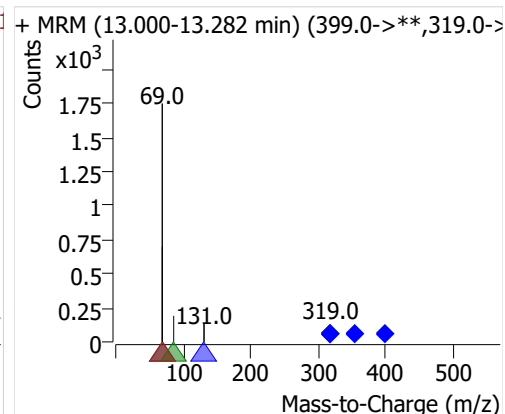
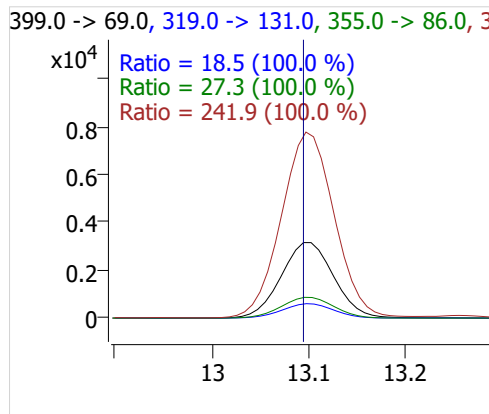
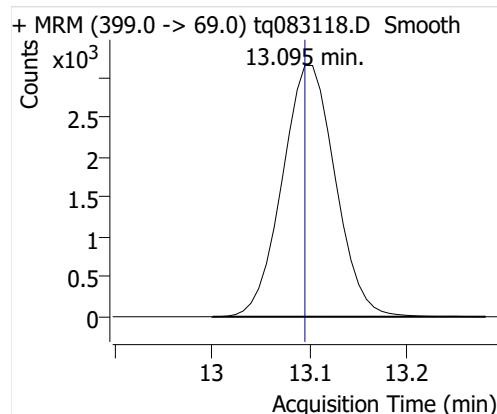
4:2 FTOH



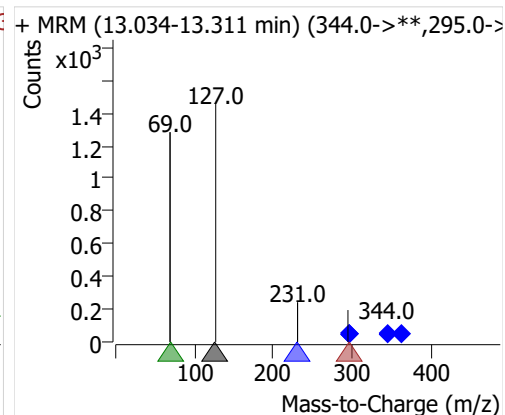
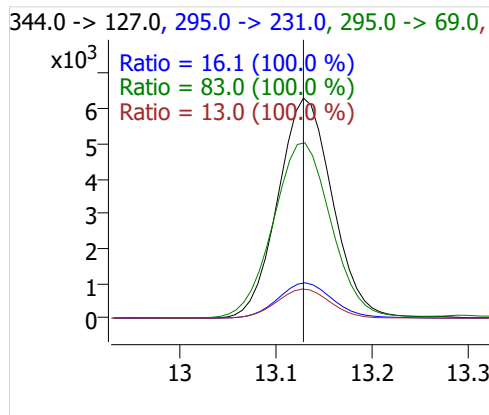
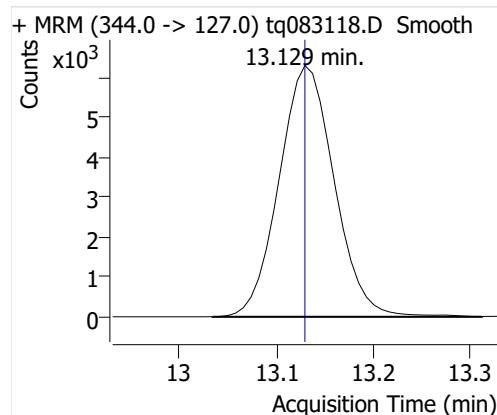
5:2sFTOH



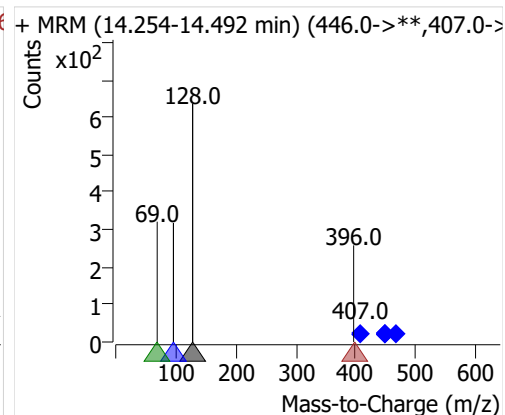
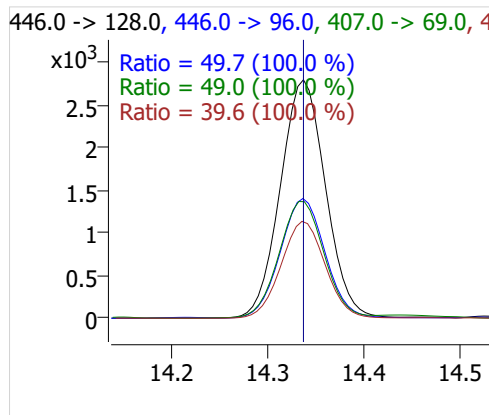
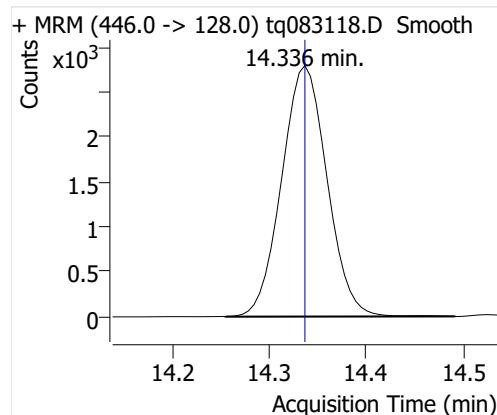
7:2sFTOH



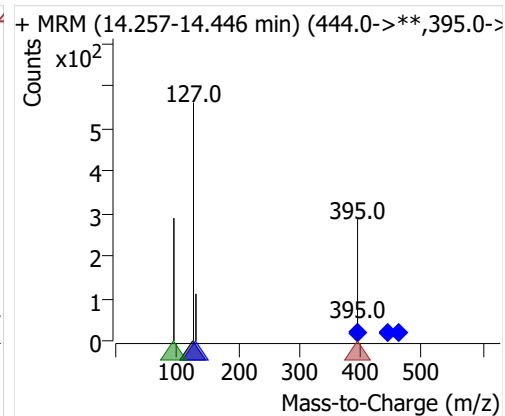
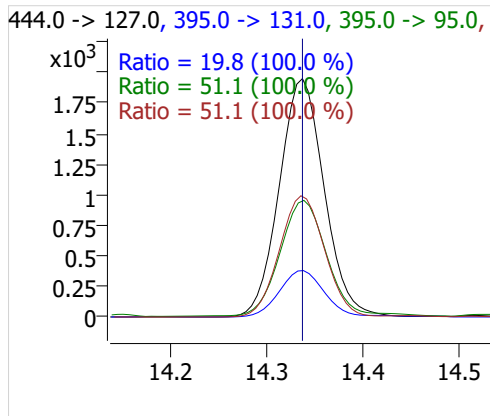
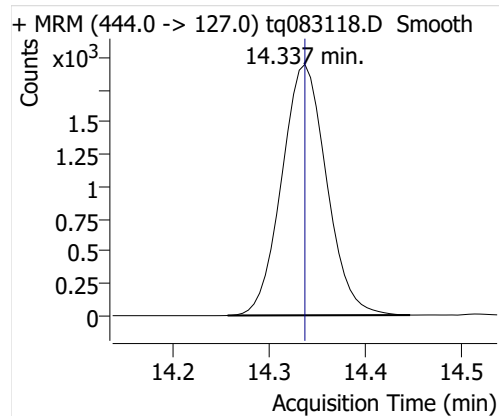
6:2 FTOH



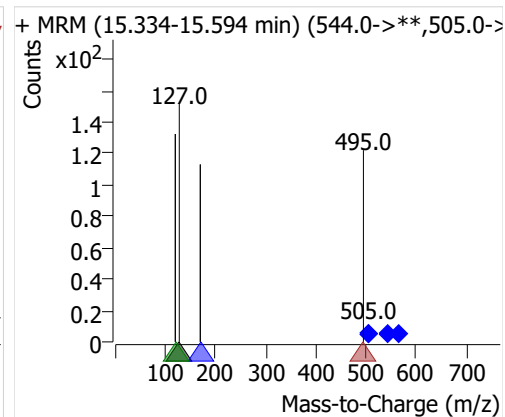
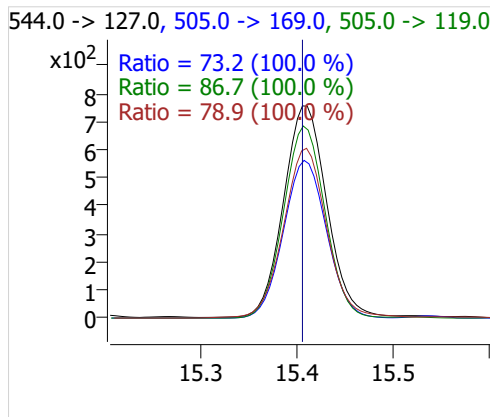
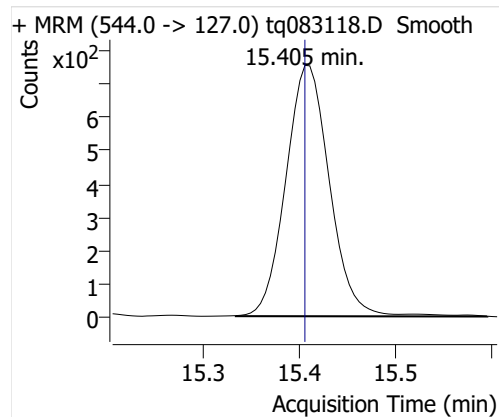
8:2 FTOH-C13



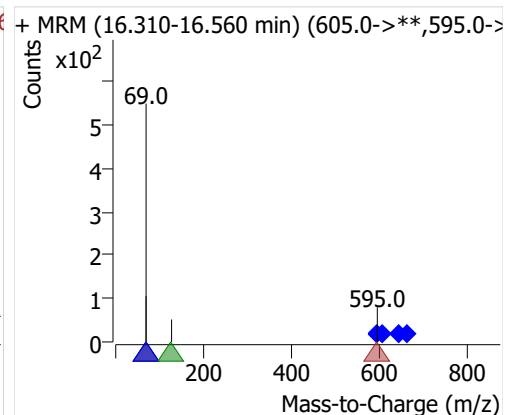
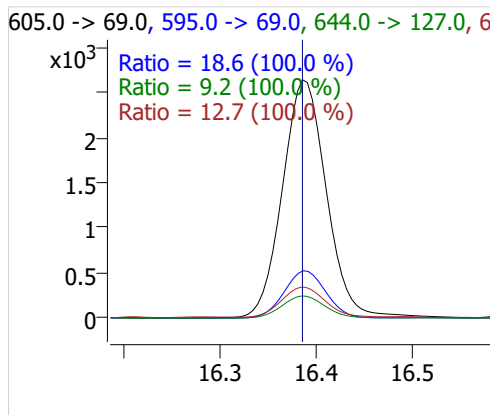
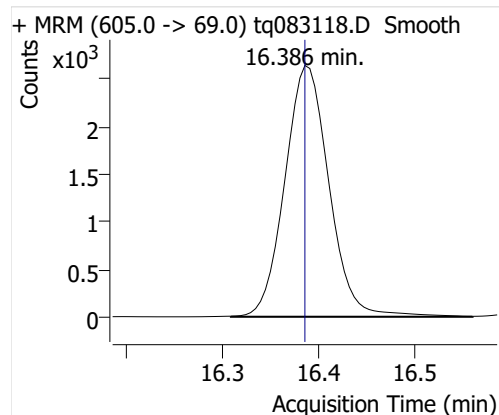
8:2 FTOH



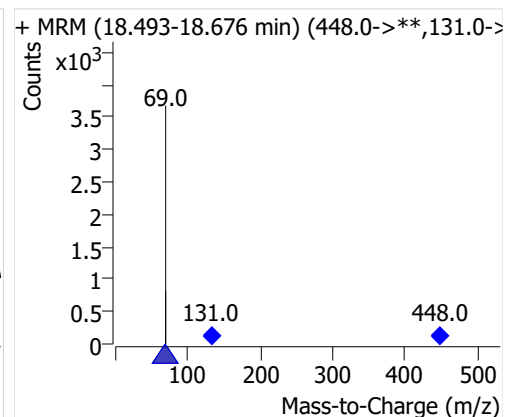
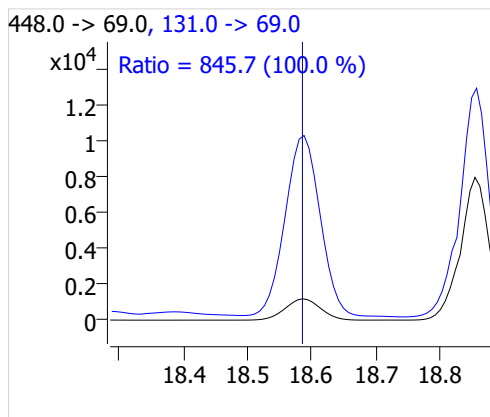
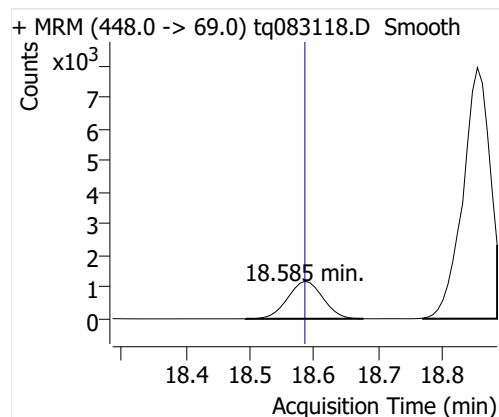
10:2 FTOH



12:2 FTOH



NMeFOSA



NETFOSA

